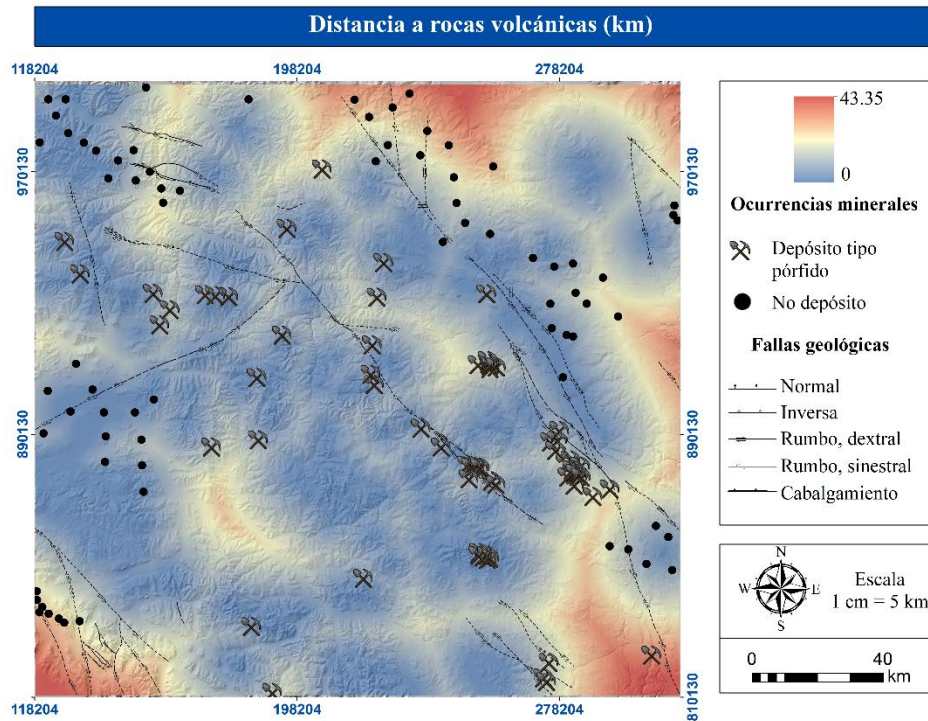
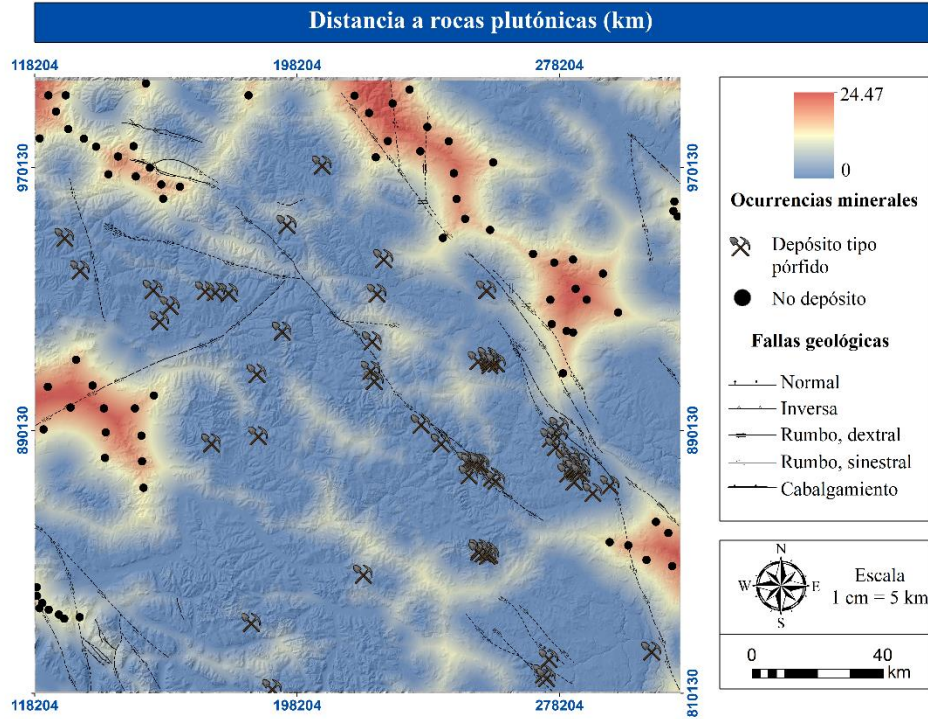
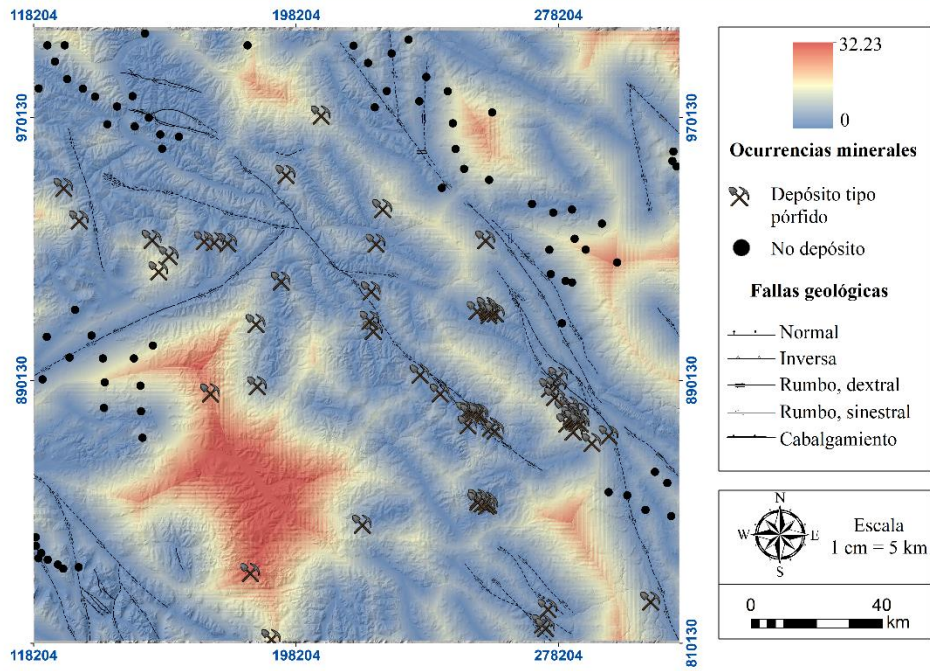


Apéndices

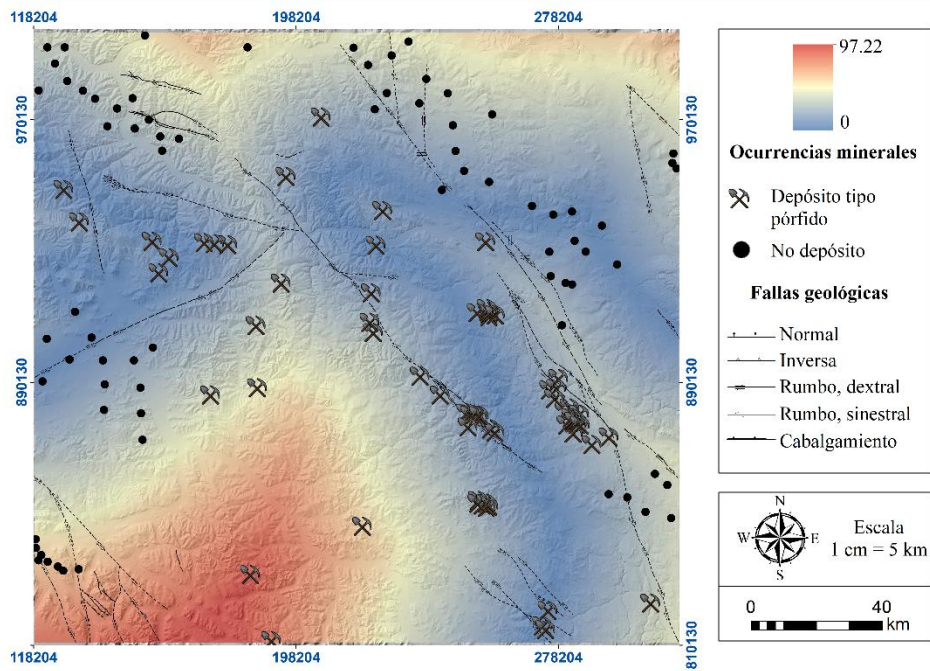
Apéndice A. Mapas predictores de depósitos tipo pórfido en Yukón



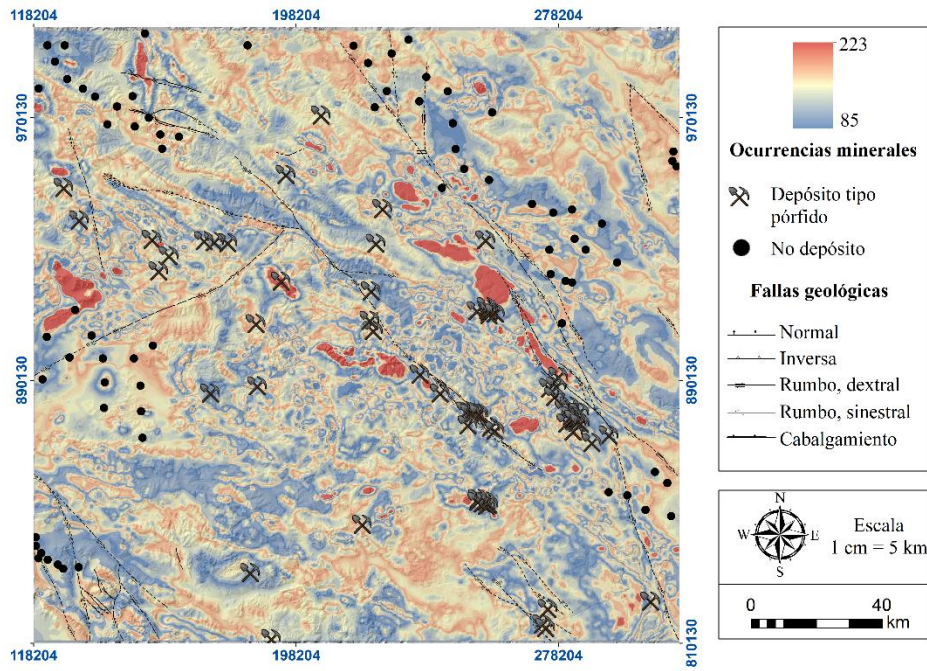
Distancia a fallas geológicas (km)



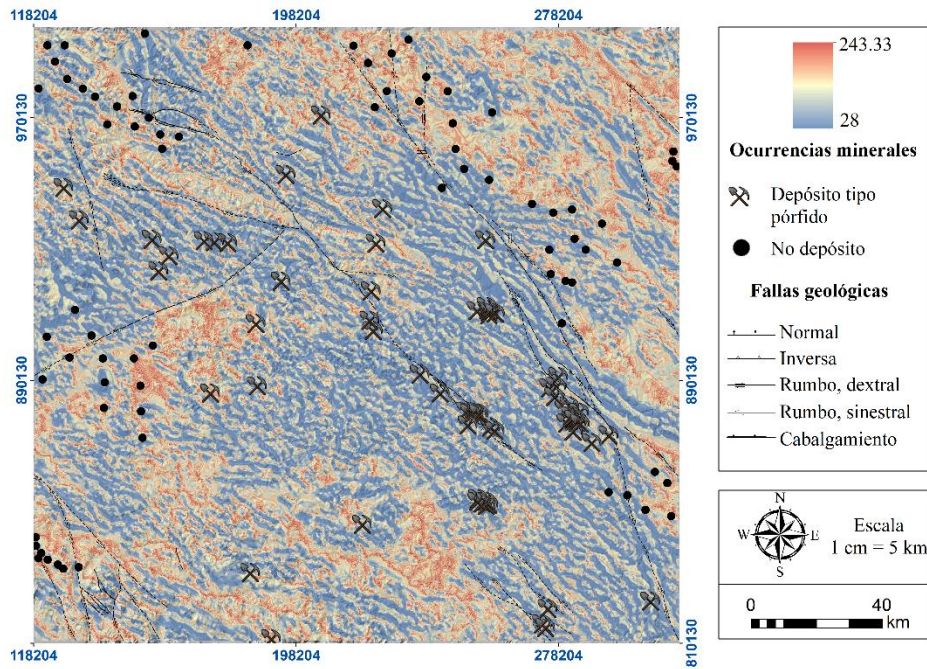
Distancia a contactos de terrenos litotectónicos (km)



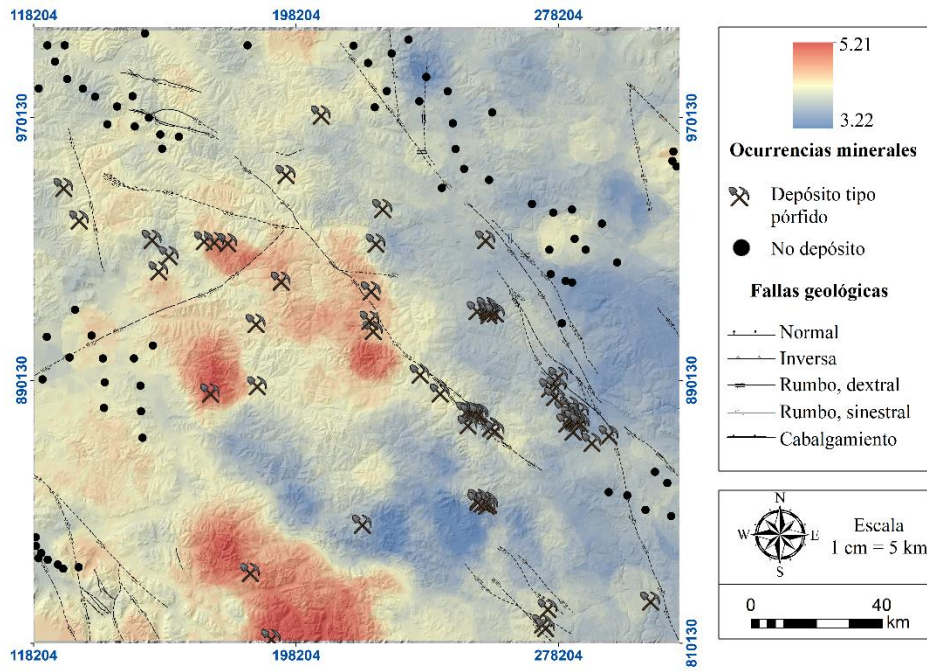
Campo total magnético residual



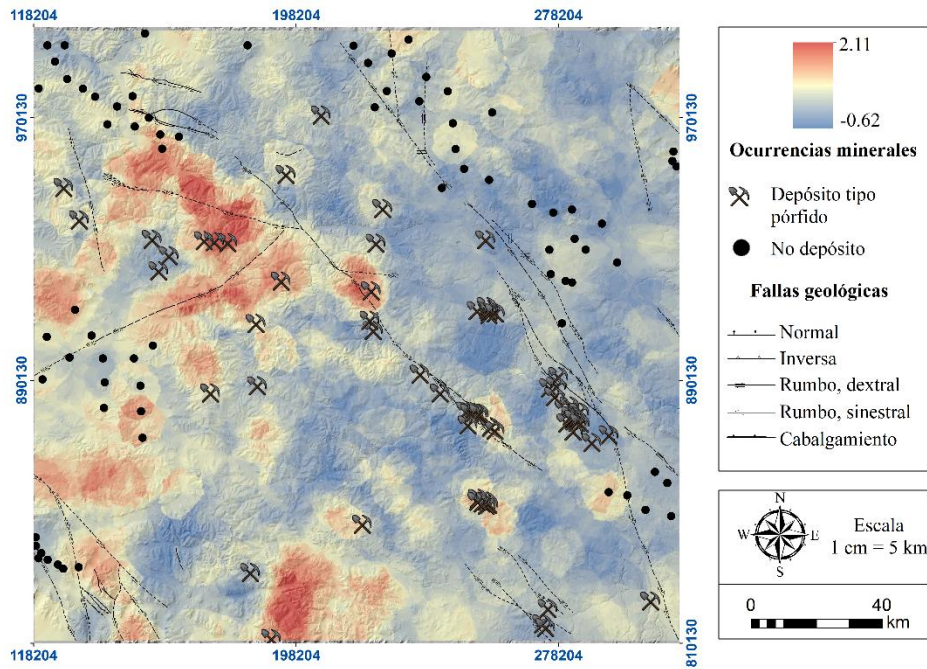
Primera derivada vertical del campo total magnético residual



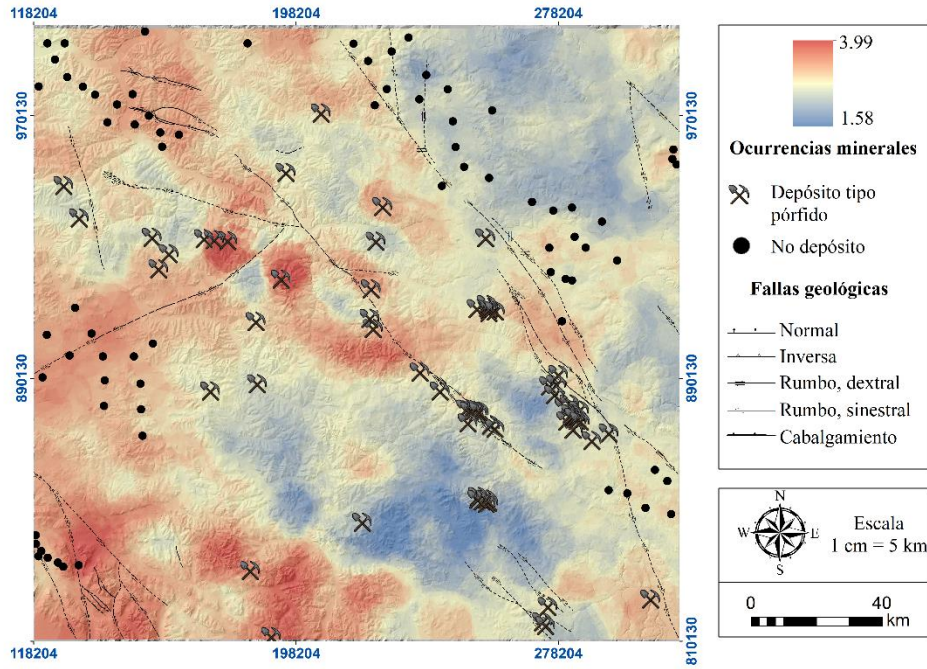
Concentración geoquímica de Zn (ppm)



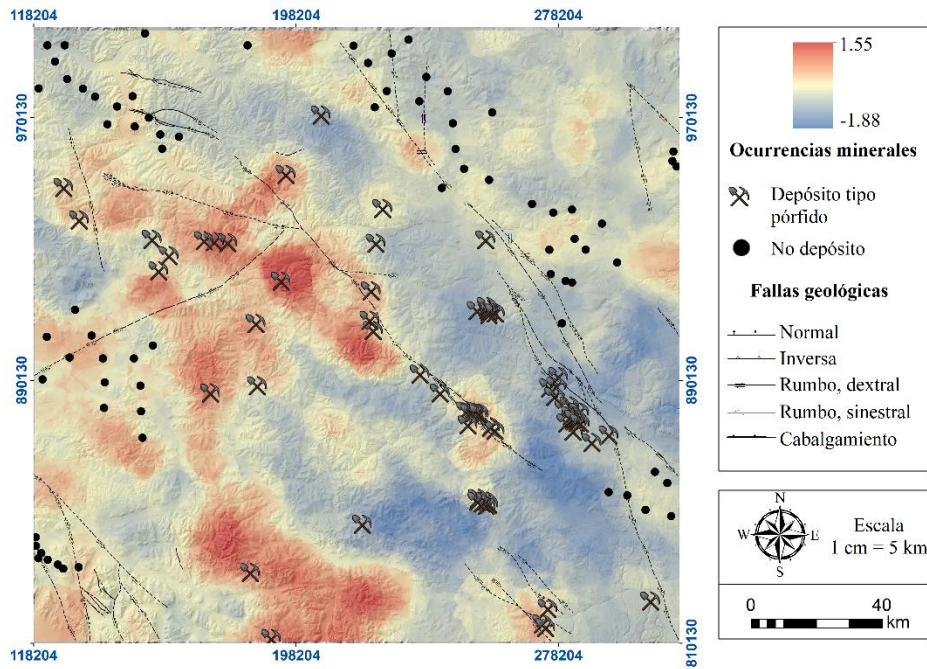
Concentración geoquímica de Au (ppb)



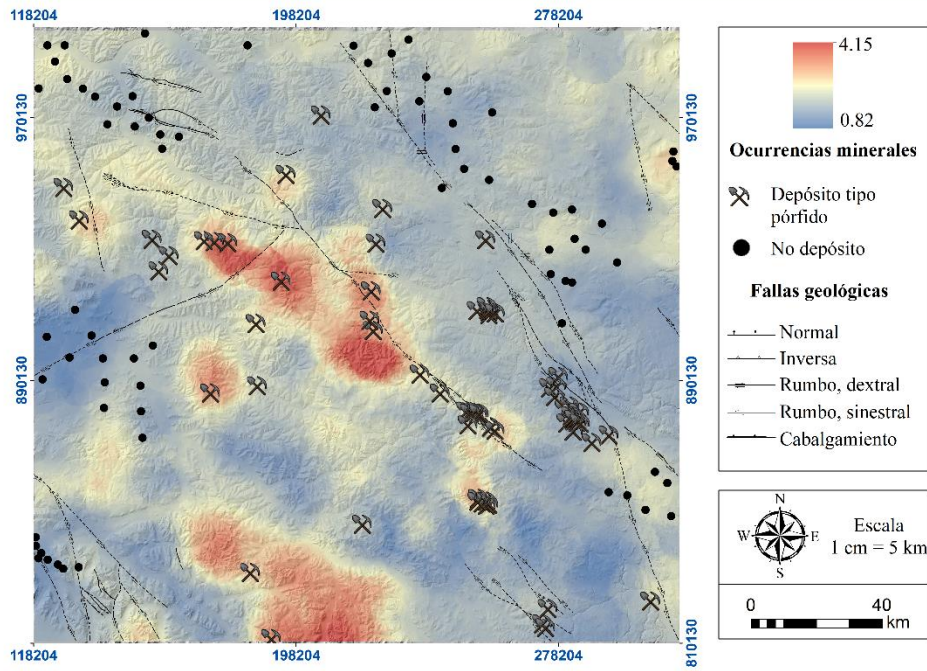
Concentración geoquímica de Cu (ppm)



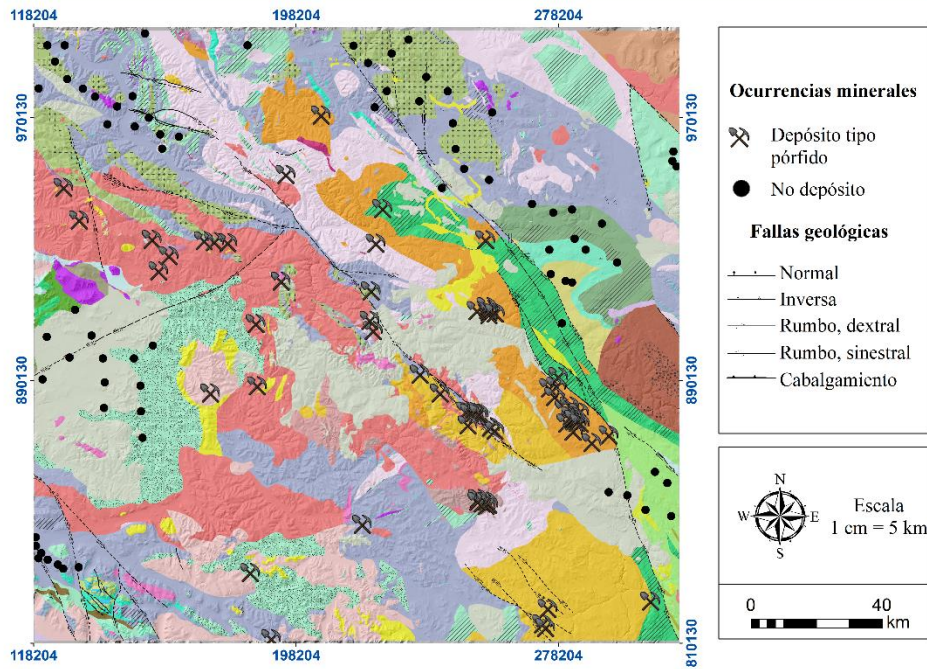
Concentración geoquímica de Mo (ppm)



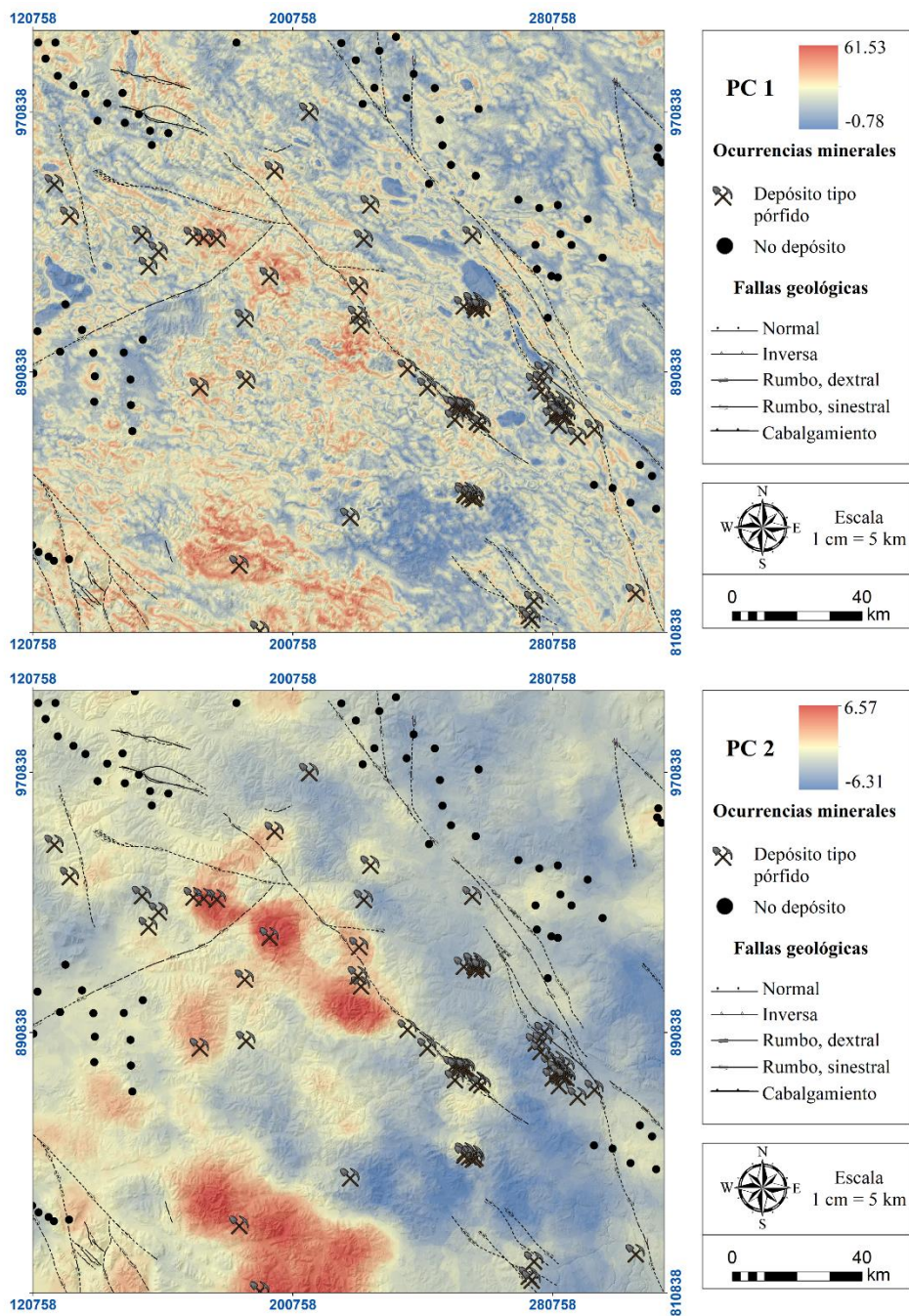
Concentración geoquímica de Pb (ppm)

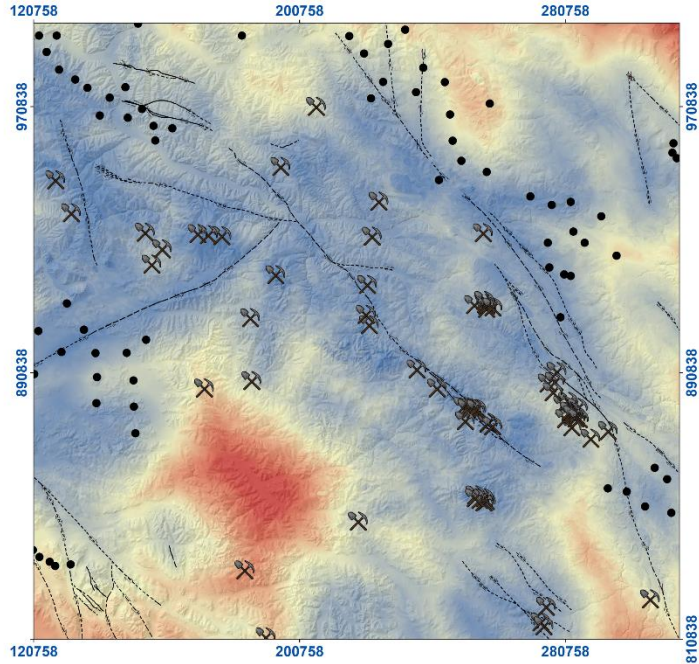


Puntos de entrenamiento



Apéndice B. Mapas predictores con PCA





PC 3

4.97
-3.16

Ocurrencias minerales

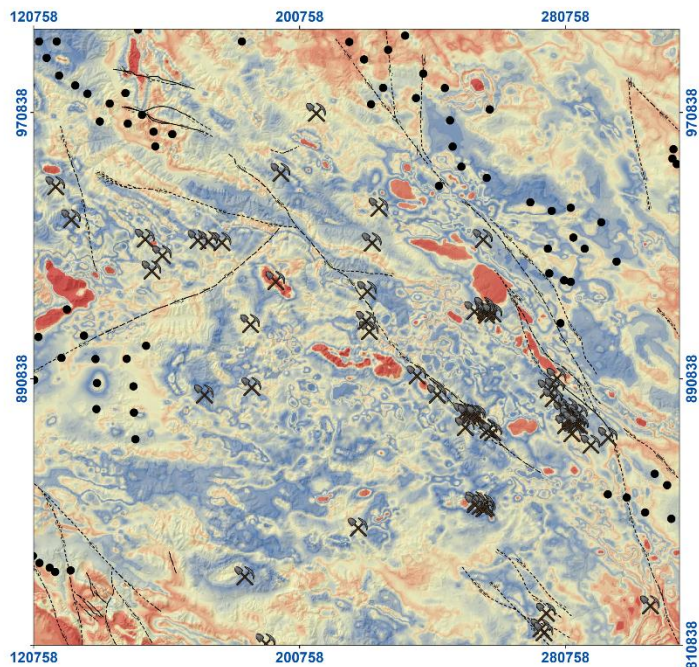
- ⌘ Depósito tipo pórfido
- No depósito

Fallas geológicas

- Normal
- Inversa
- Rumbo, dextral
- Rumbo, sinistral
- Cabalgamiento

Escala
1 cm = 5 km

0 40 km



PC 4

3.82
-2.54

Ocurrencias minerales

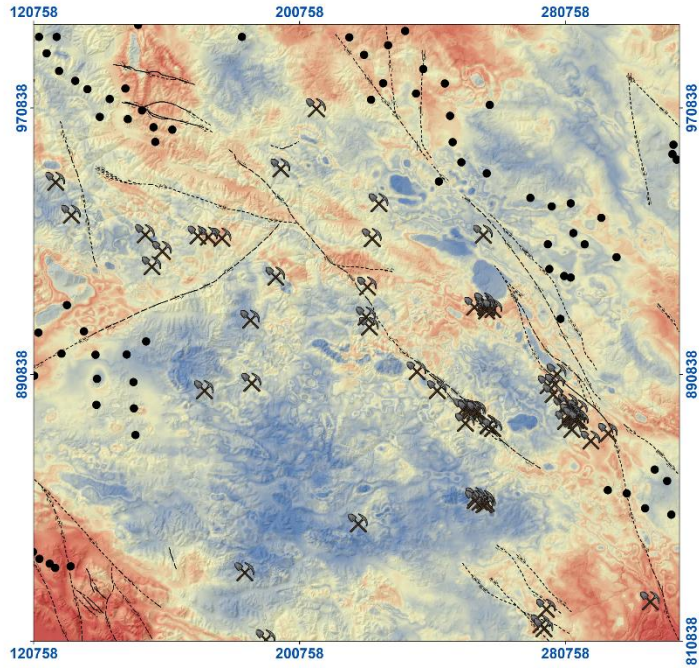
- ⌘ Depósito tipo pórfido
- No depósito

Fallas geológicas

- Normal
- Inversa
- Rumbo, dextral
- Rumbo, sinistral
- Cabalgamiento

Escala
1 cm = 5 km

0 40 km



PC 5

3.91
-3.46

Ocurrencias minerales

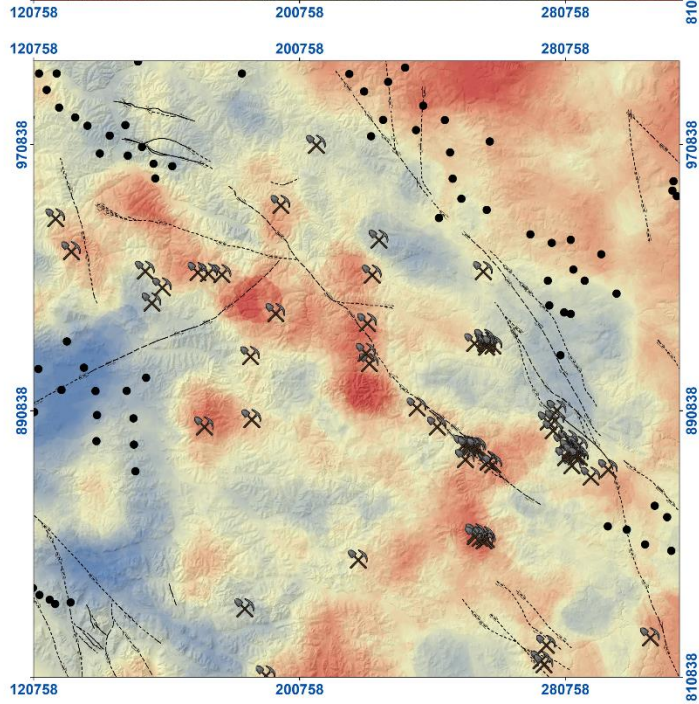
- Depósito tipo pórfido
- No depósito

Fallas geológicas

- Normal
- Inversa
- Rumbo, dextral
- Rumbo, sinistral
- Cabalgamiento

Escala
1 cm = 5 km

0 40 km



PC 6

2.96
-2.52

Ocurrencias minerales

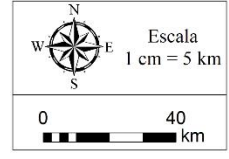
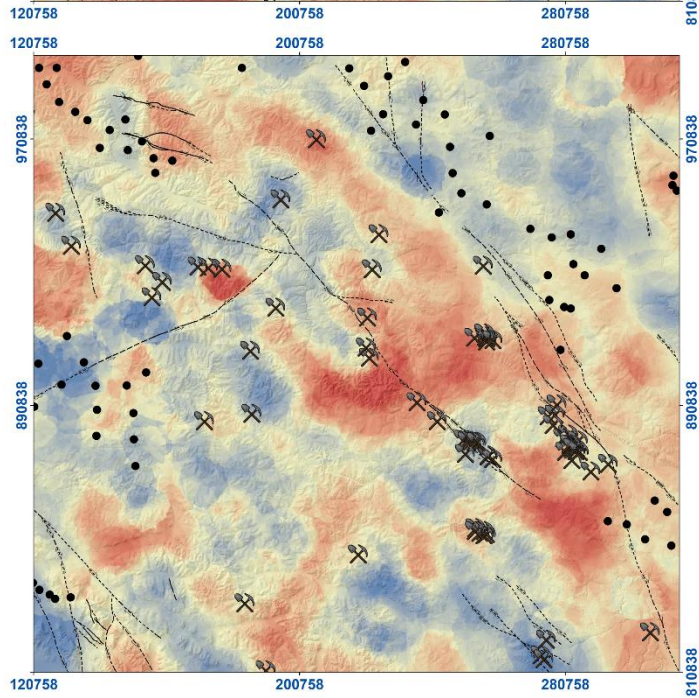
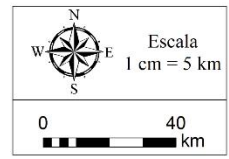
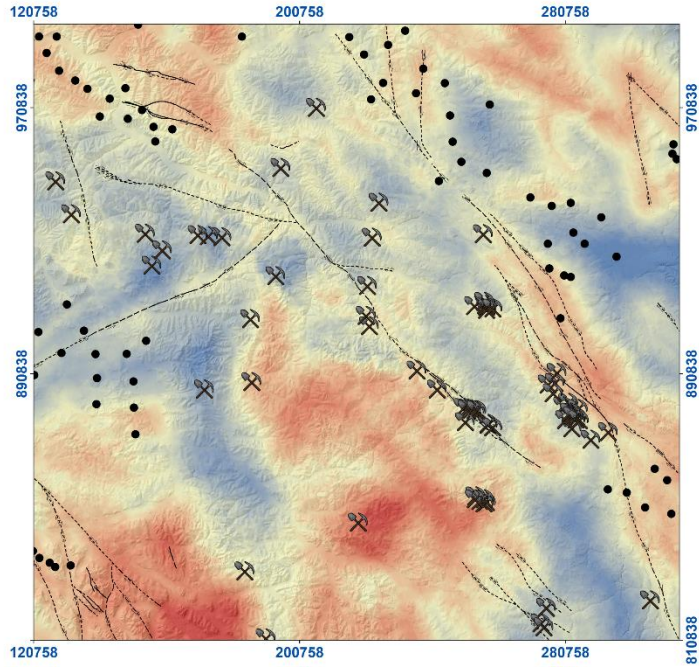
- Depósito tipo pórfido
- No depósito

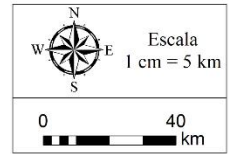
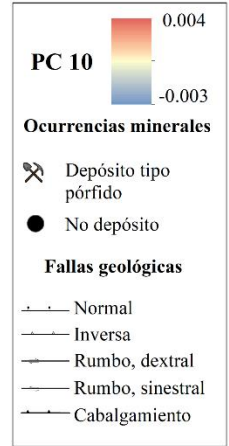
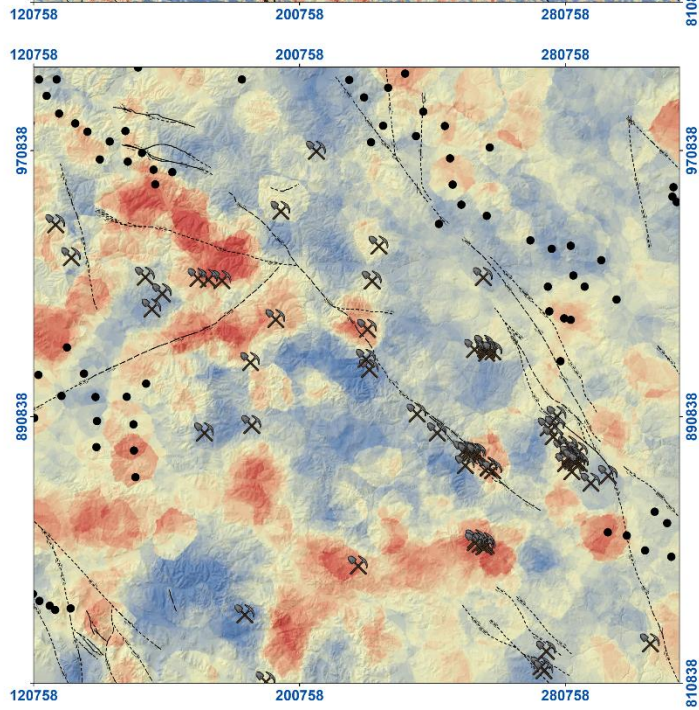
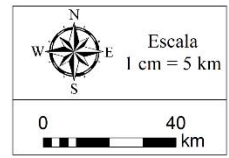
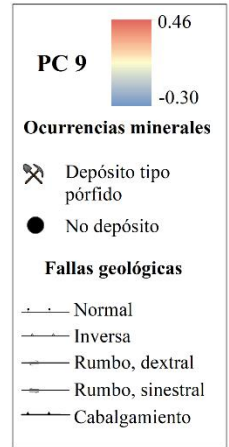
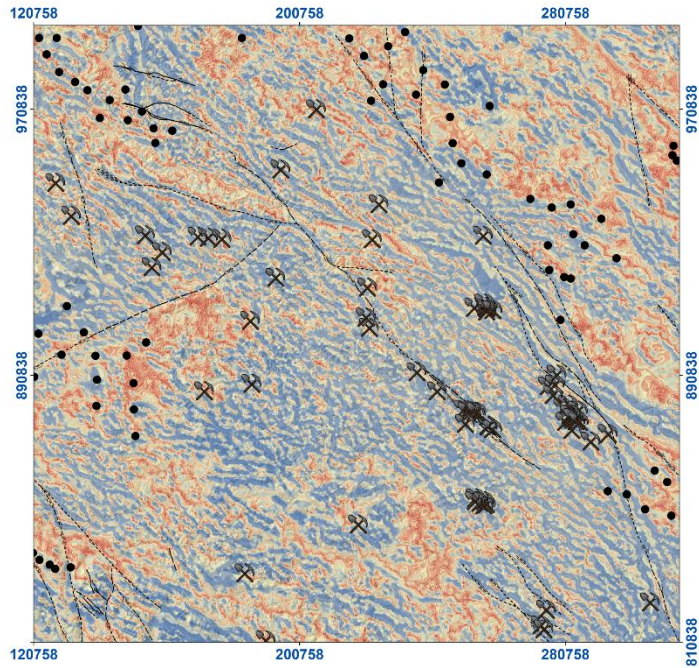
Fallas geológicas

- Normal
- Inversa
- Rumbo, dextral
- Rumbo, sinistral
- Cabalgamiento

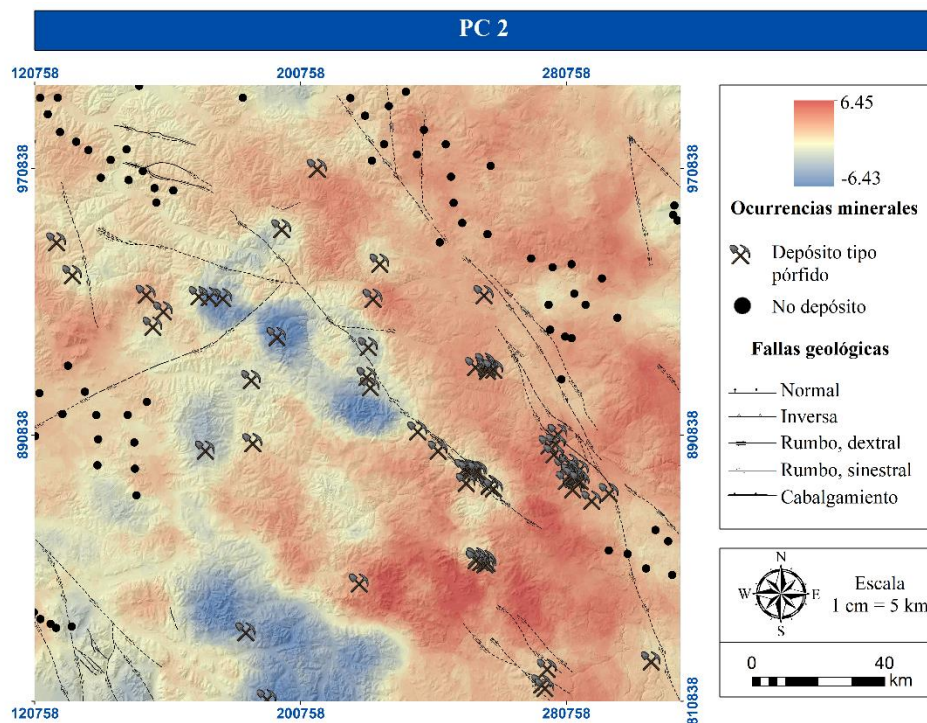
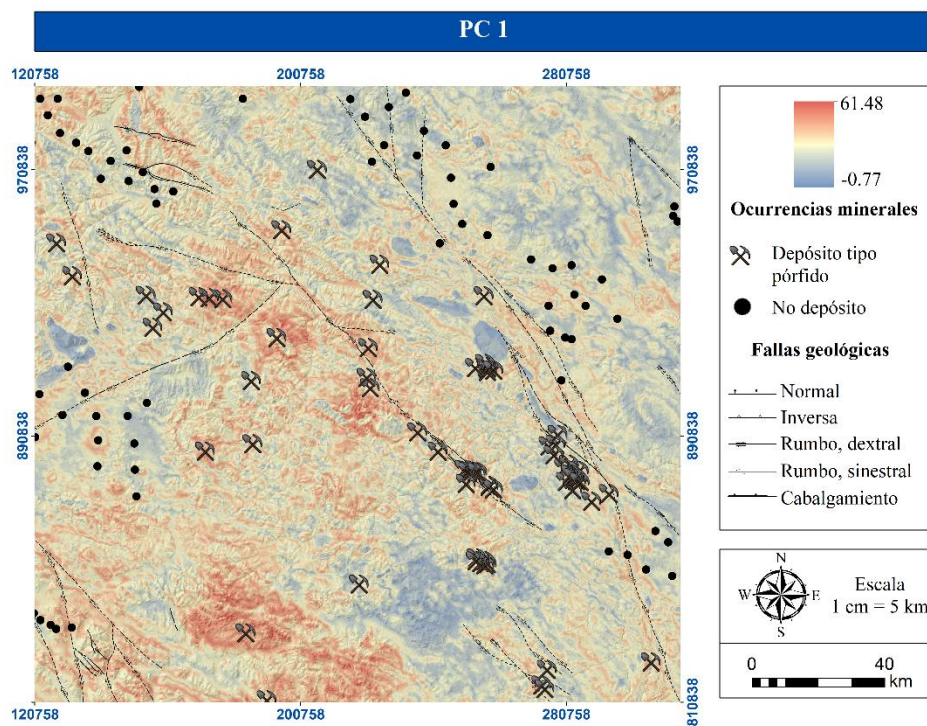
Escala
1 cm = 5 km

0 40 km

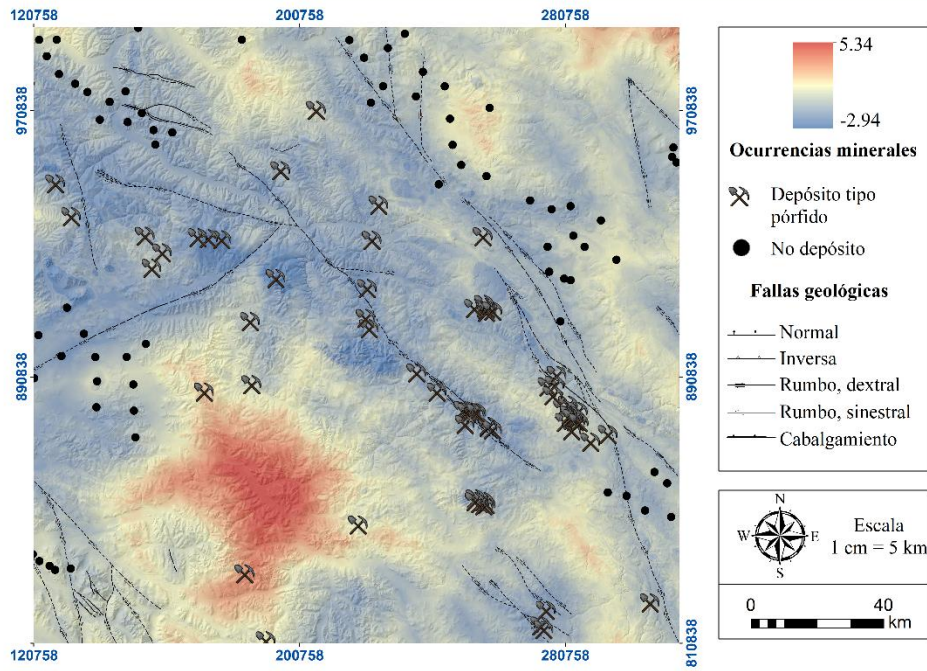




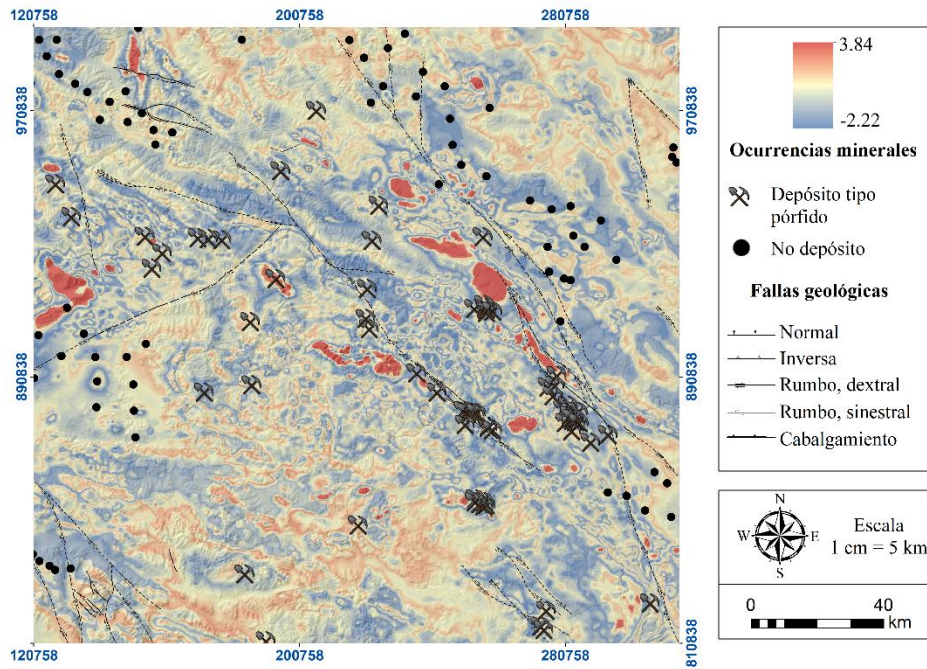
Apéndice C. Mapas predictores con PCA. Análisis con nueve componentes principales



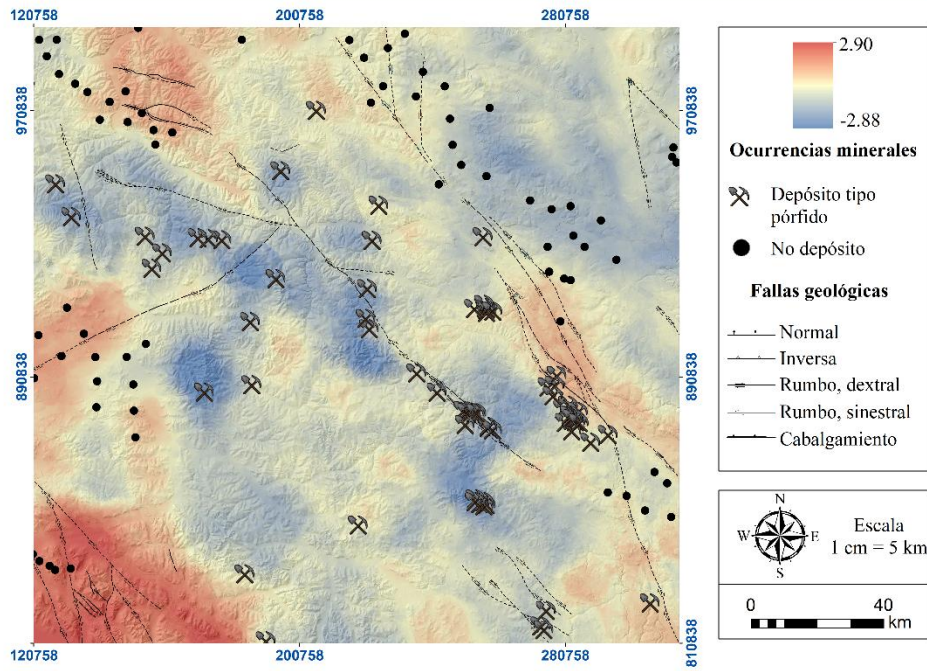
PC 3



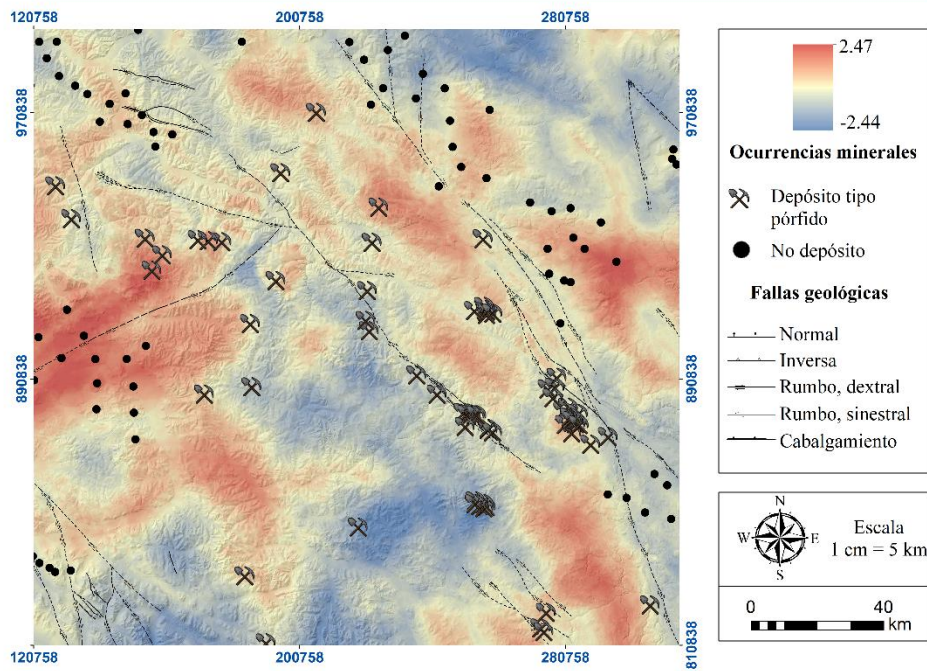
PC 4



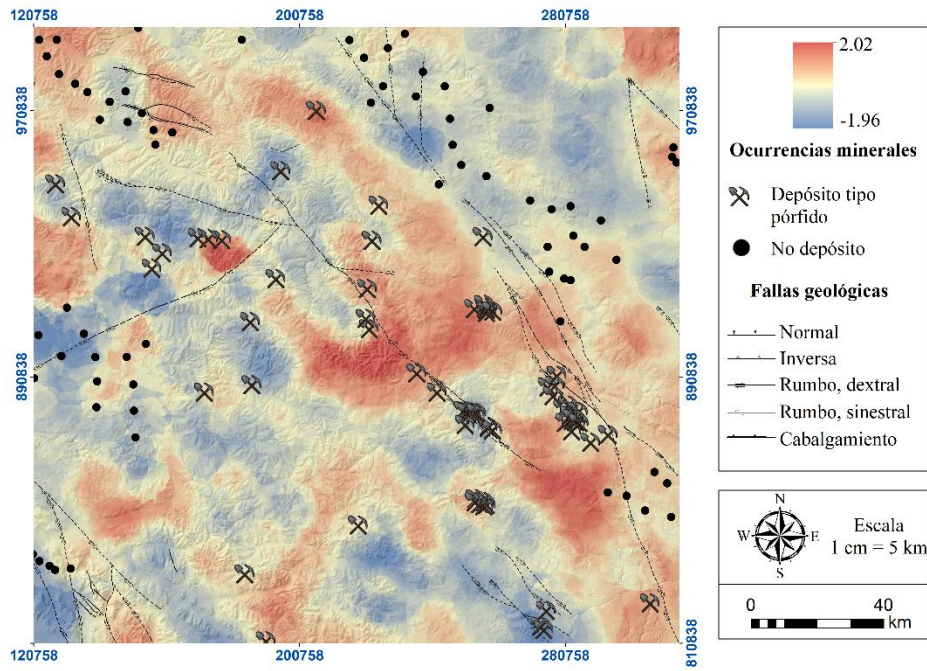
PC 5



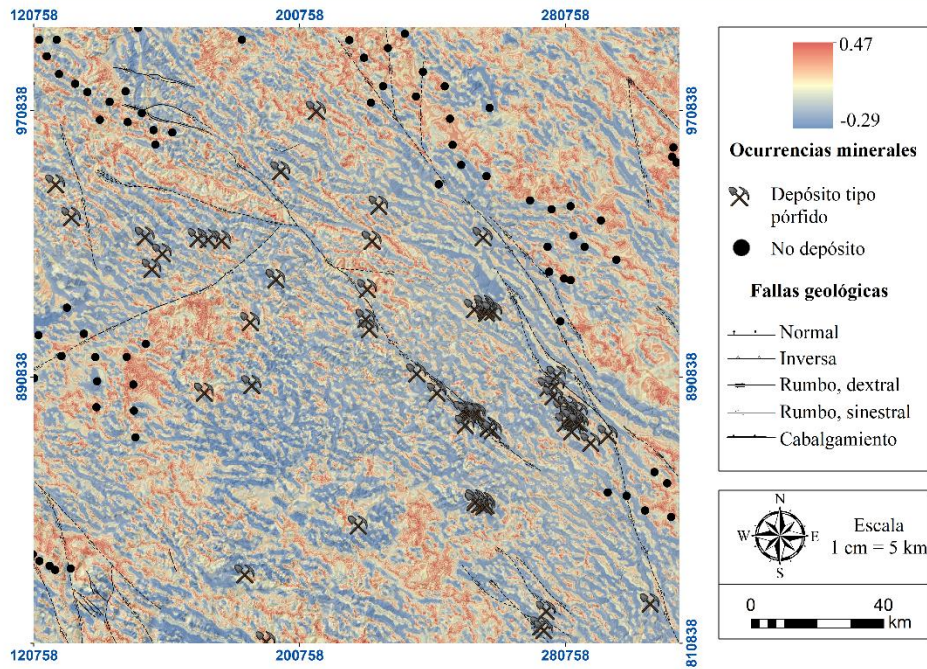
PC 6

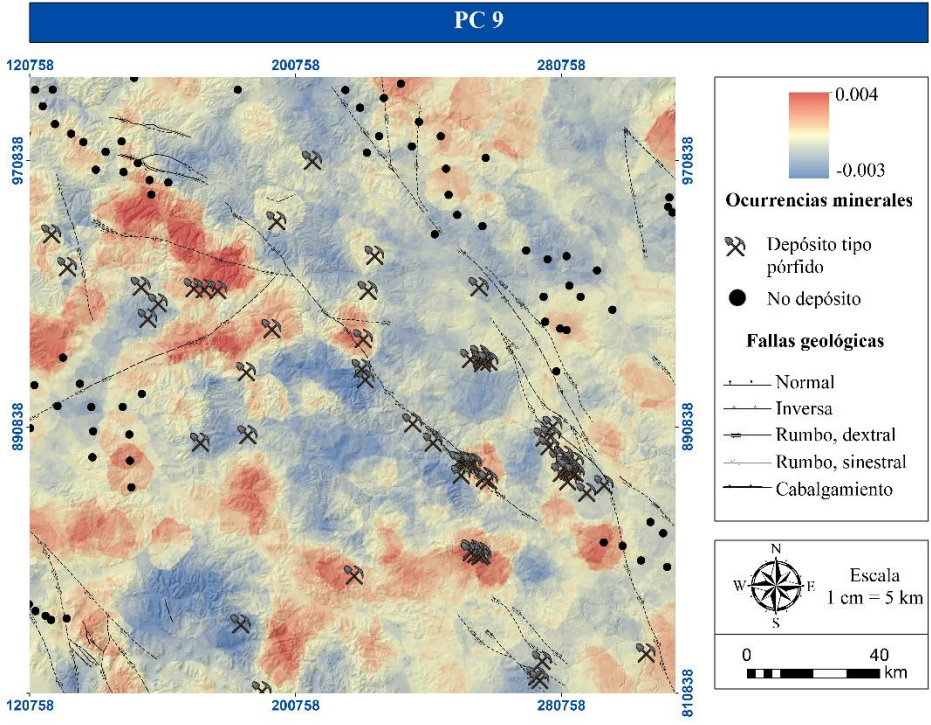


PC 7

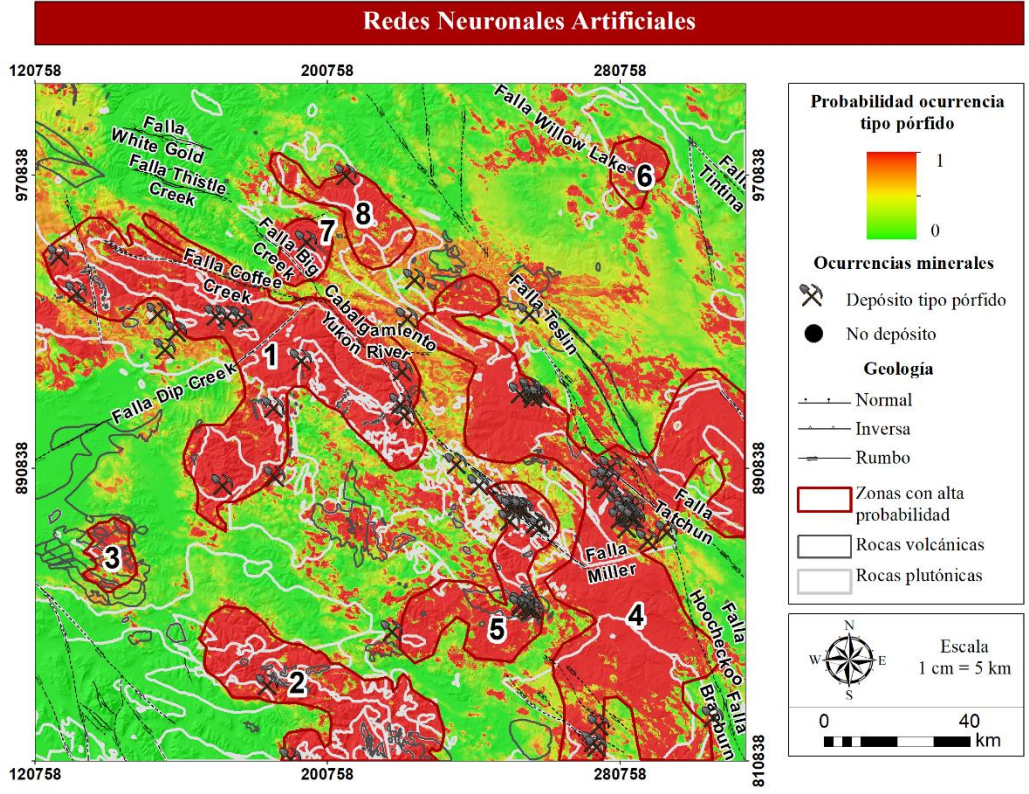


PC 8

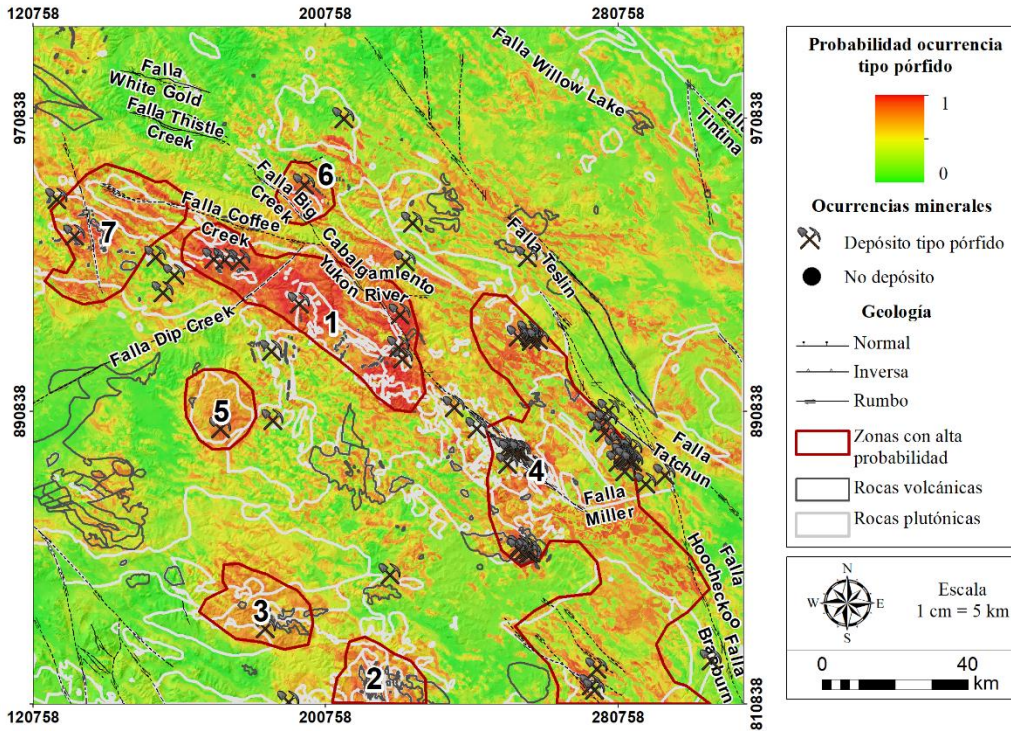




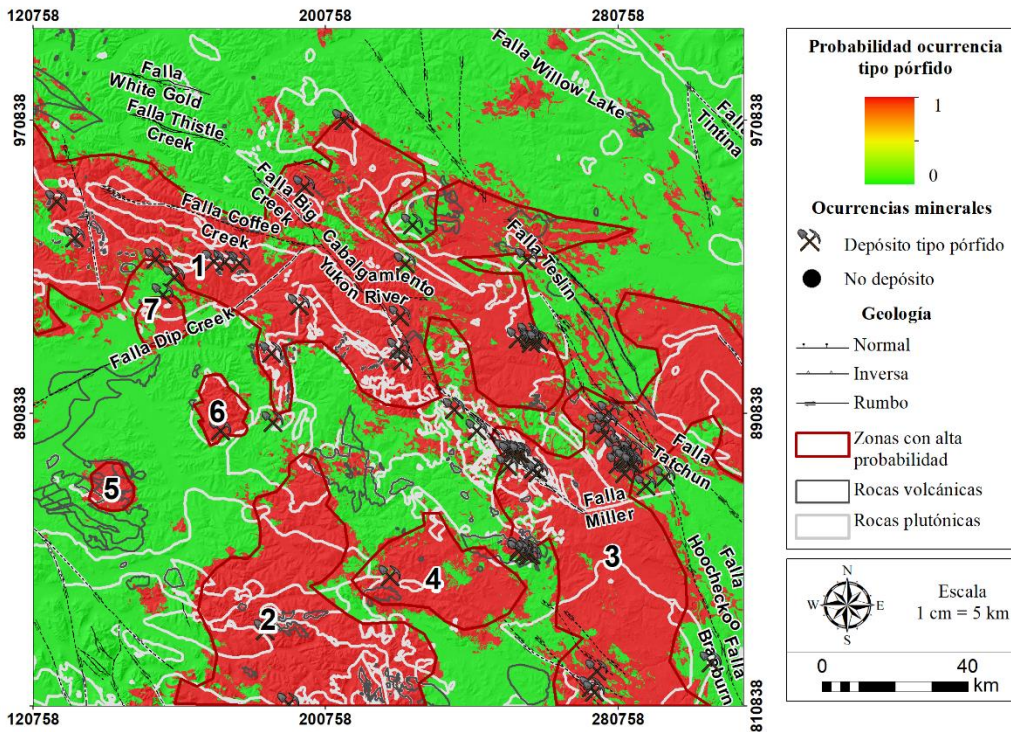
Apéndice D. Mapas de probabilidad



Bosques aleatorios

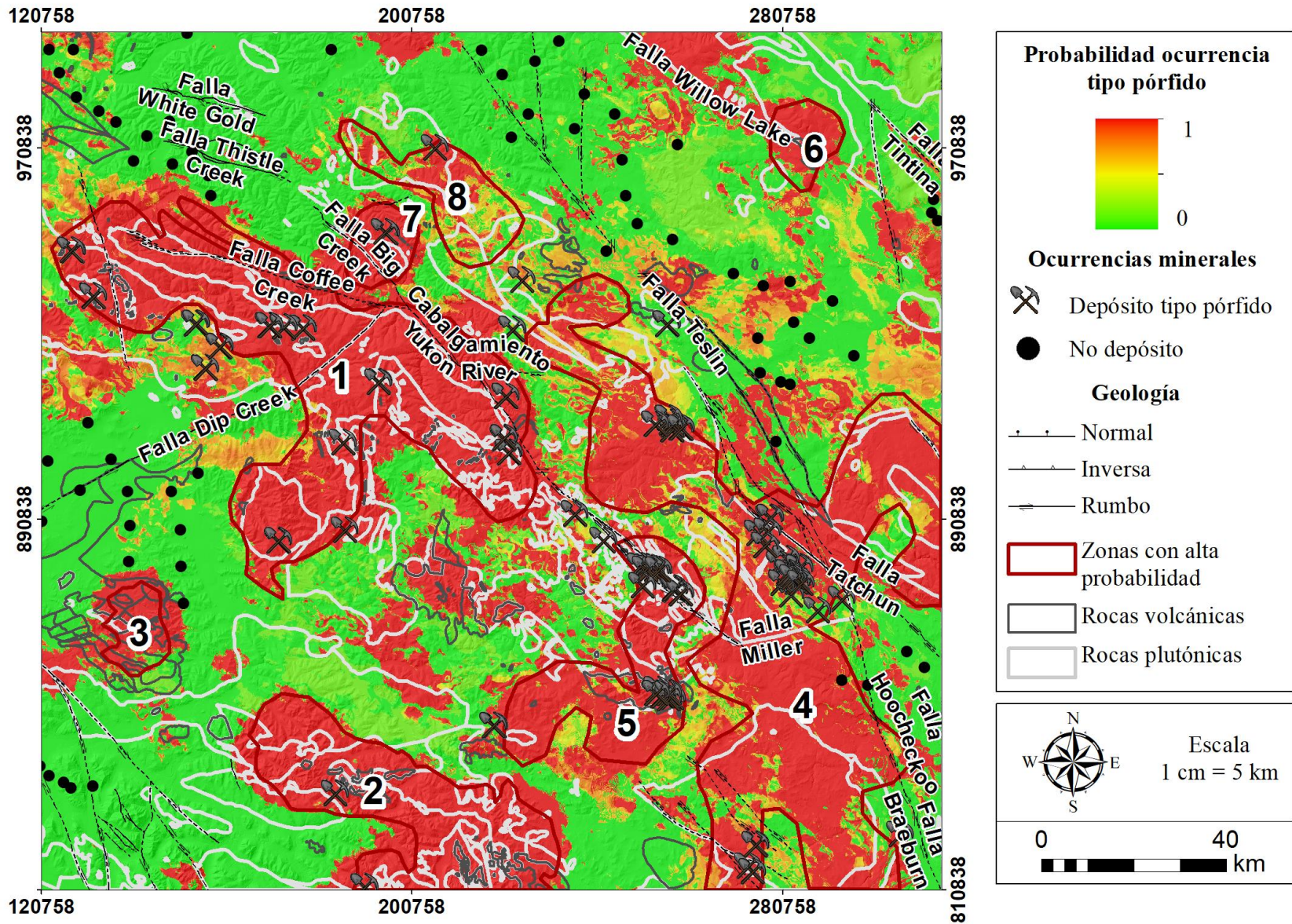


Máquinas de Soporte Vectorial

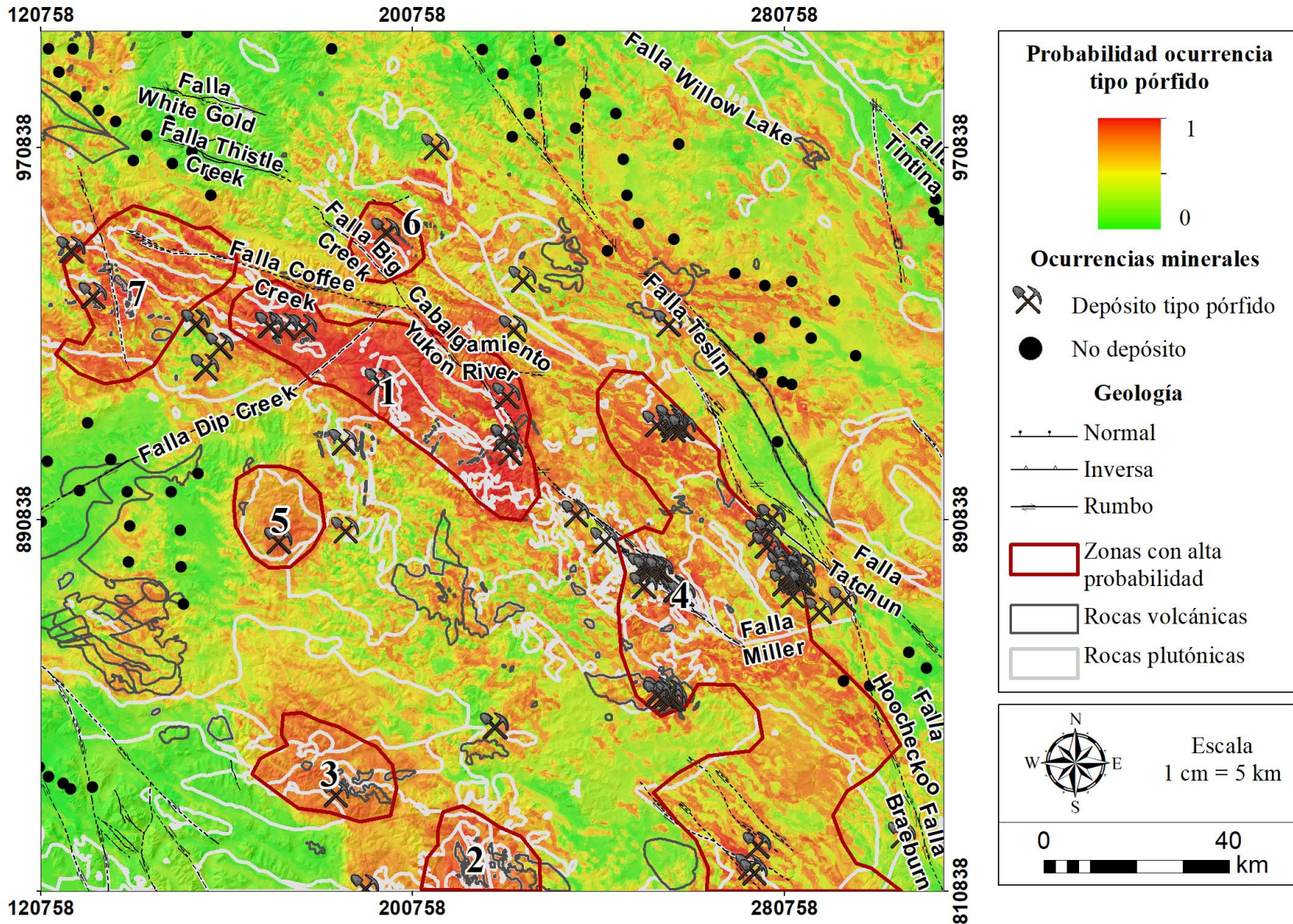


Apéndice E. Mapas de probabilidad con el aumento de datos

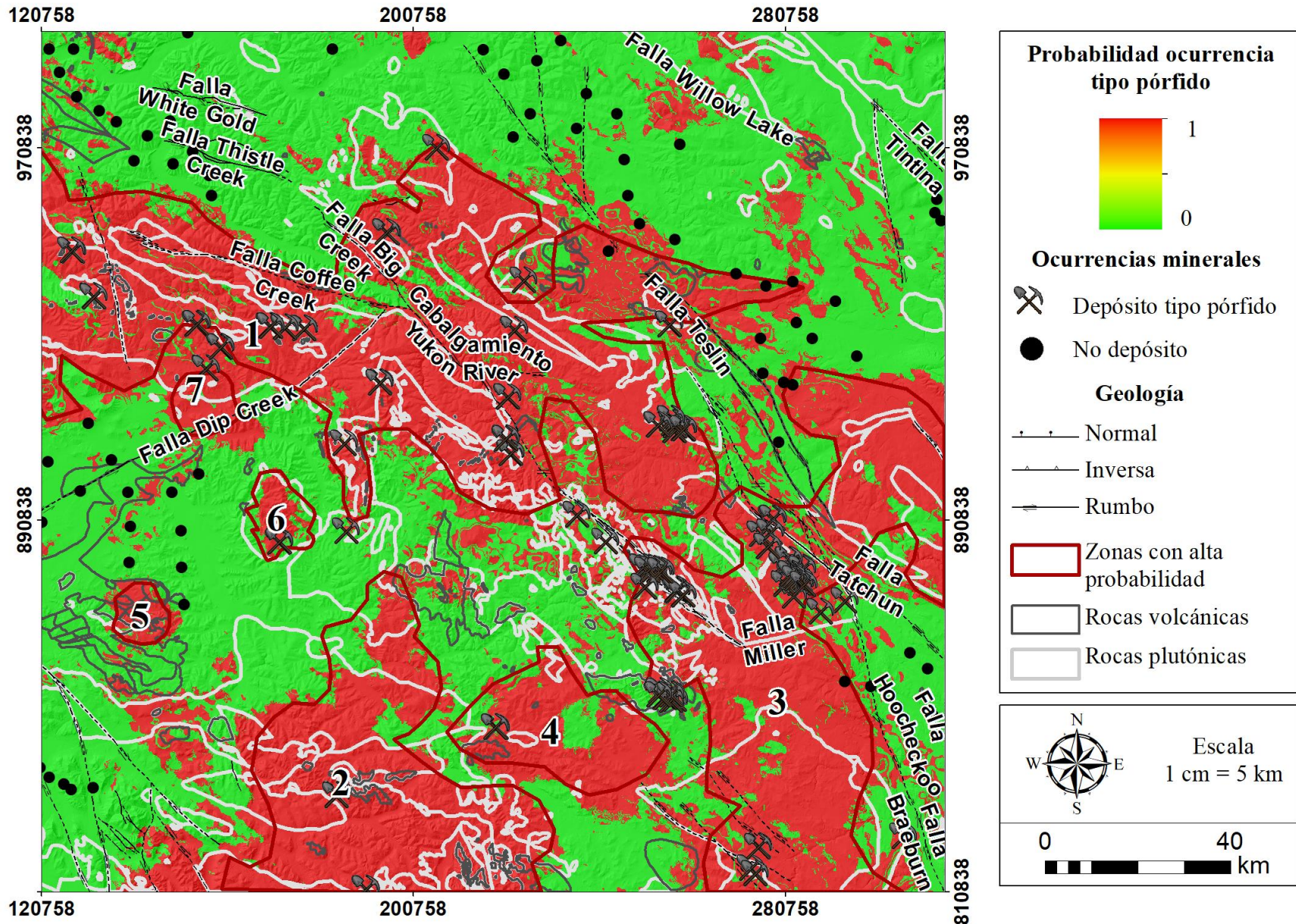
Redes Neuronales Artificiales - Aumento de datos



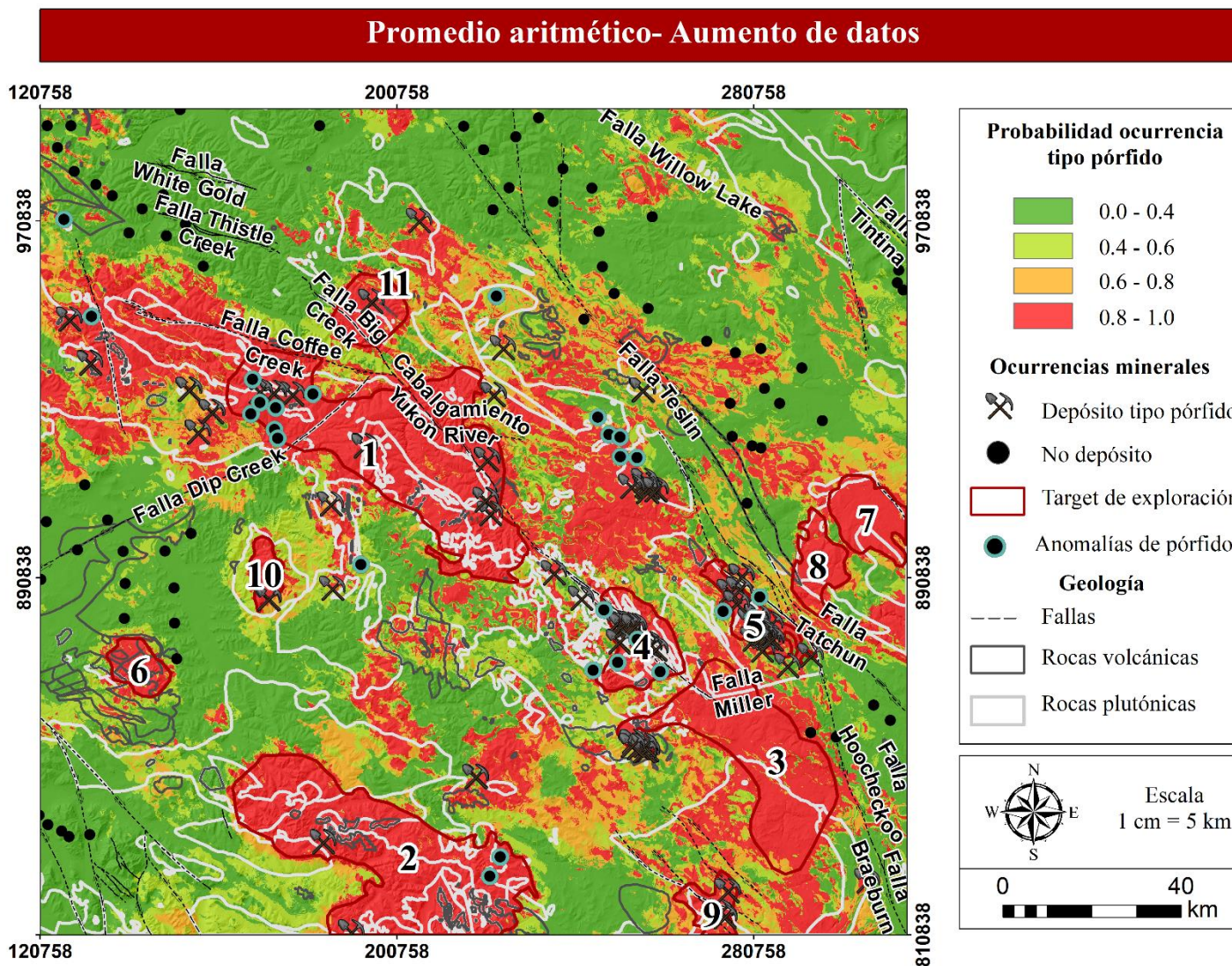
Bosques aleatorios - Aumento de datos



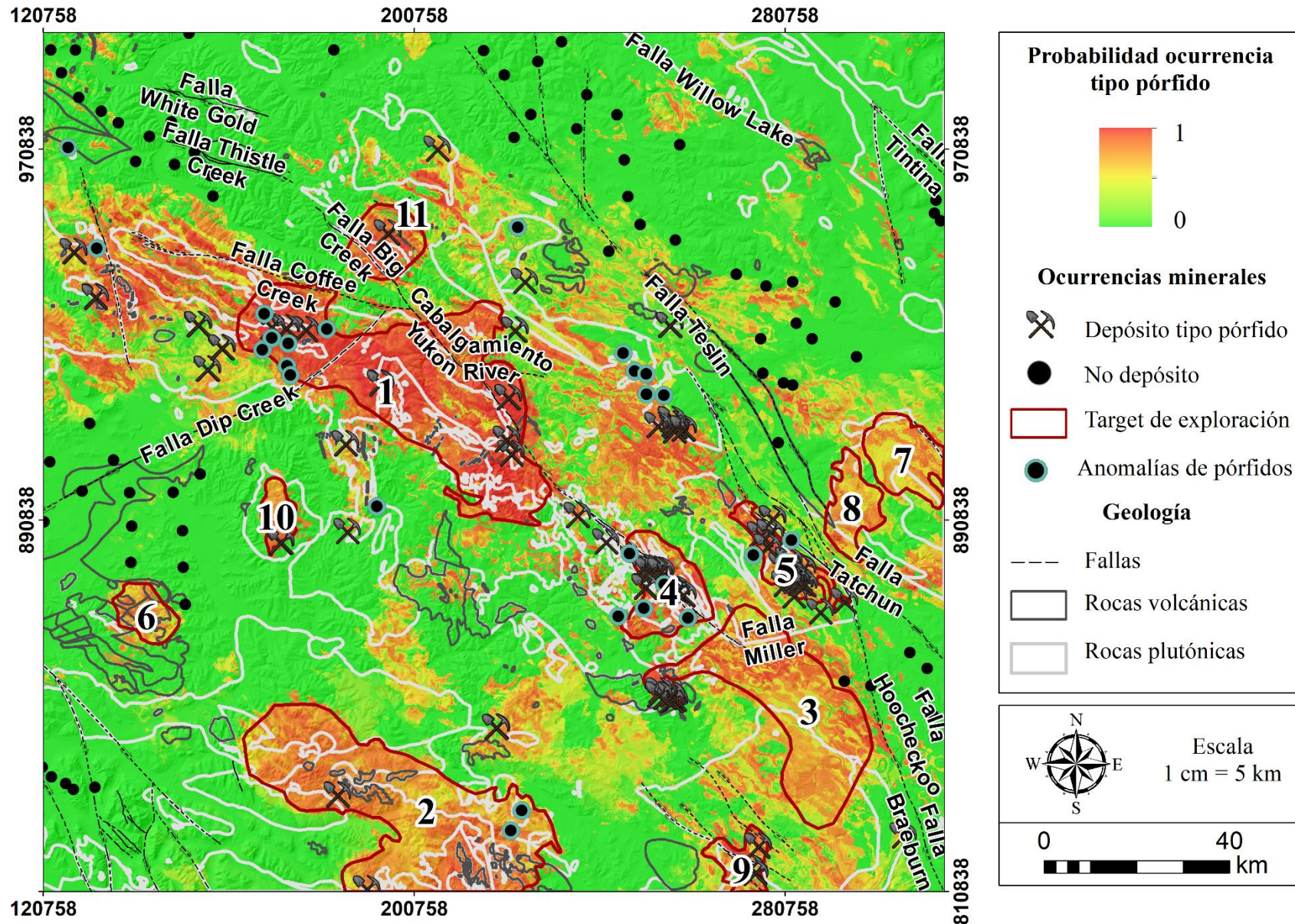
Máquinas de soporte vectorial - Aumento de datos



Apéndice F. Promedio aritmético y promedio geométrico con el aumento de datos



Promedio geométrico- Aumento de datos



Apéndice G. Relación de las variables de entrada con los polígonos de probabilidad >80%.

