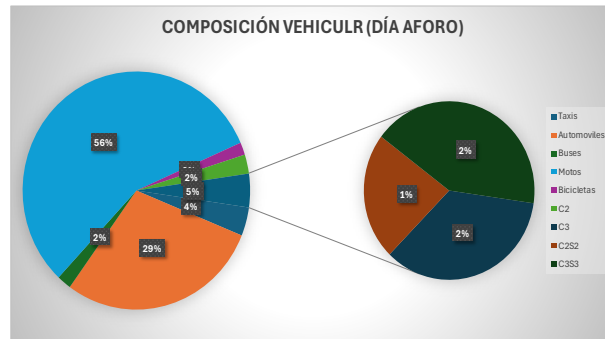


MOVIMIENTOS VEHICULARES AFORADOS

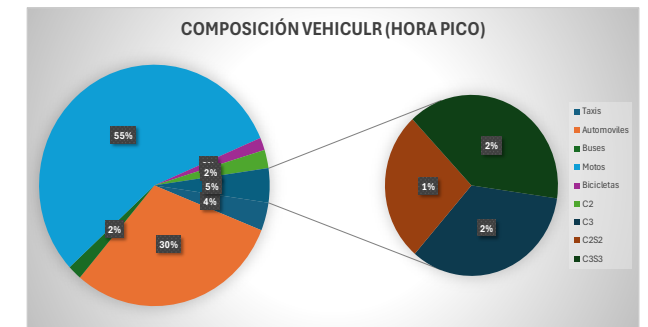


COMPOSICIÓN VEHICULAR

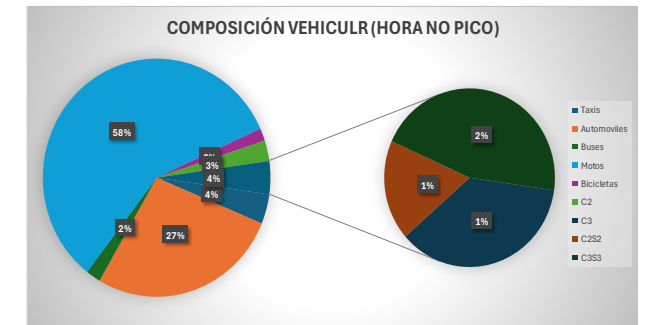
Día aforo		%
Taxis	1153	3.88
Automoviles	8560	28.80
Buses	601	2.02
Motos	16778	56.45
Bicicletas	504	1.70
C2	772	2.60
C3	475	1.60
C2S2	312	1.05
C3S3	569	1.91
TOTAL	29724	100



Hora pico		%
Taxis	631	3.76
Automoviles	5852	30.11
Buses	330	1.97
Motos	9298	55.42
Bicicletas	282	1.68
C2	411	2.45
C3	263	1.57
C2S2	206	1.23
C3S3	303	1.81
TOTAL	16776	100

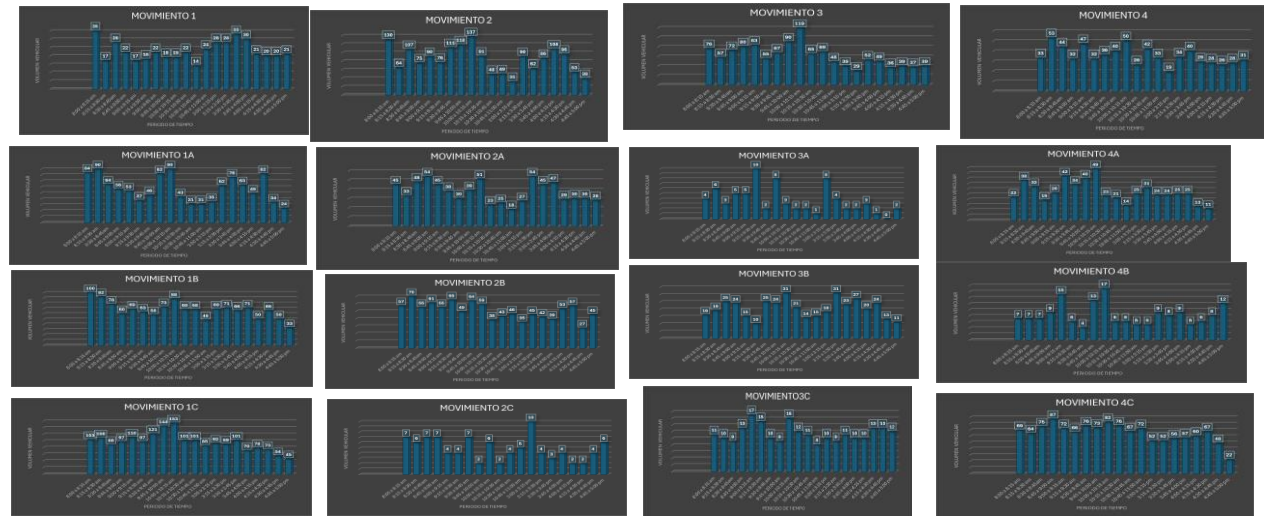
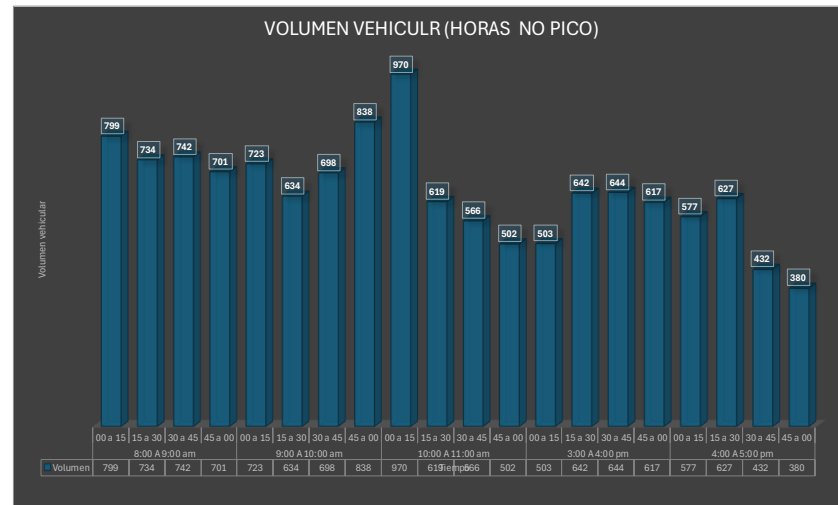


Hora no pico		%
Taxis	522	4.03
Automoviles	3508	27.09
Buses	271	2.09
Motos	7480	57.77
Bicicletas	222	1.71
C2	361	2.79
C3	212	1.64
C2S2	106	0.82
C3S3	266	2.05
TOTAL	12948	100



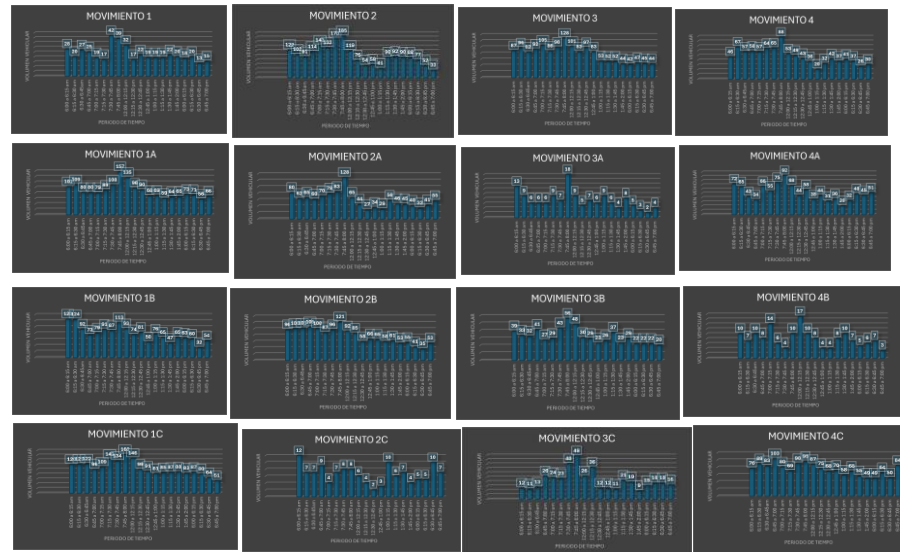
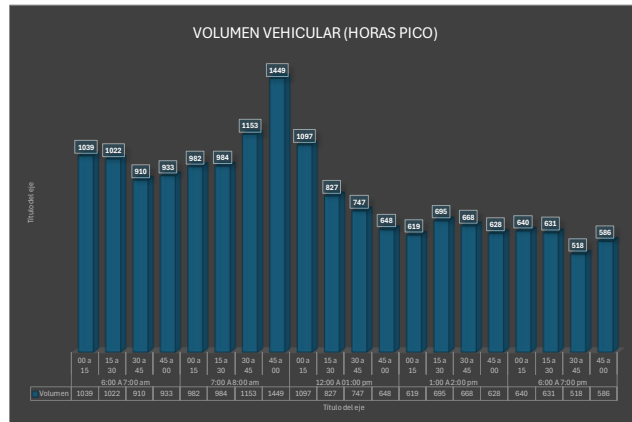
MOVIMIENTOS Y VOLUMENES VEHICULAR (HORA NO PICO)

HORA	PERIODO	MOVIMIENTOS VEHICULRES (HORA NO PICO)																VOLUMEN	VOLUMEN TOTAL
		1	2	3	4	1(a)	2(a)	3(a)	4(a)	1(b)	2(b)	3(b)	4(b)	1(c)	2(c)	3(c)	4(c)		
8:00 A 9:00 am	00 a 15	35	130	76	33	84	45	4	22	100	57	16	7	103	7	11	69	799	2976
	15 a 30	17	64	57	53	90	33	6	38	92	70	19	7	108	6	10	64	734	
	30 a 45	28	107	72	44	64	48	3	32	78	55	25	7	88	7	9	75	742	
	45 a 00	22	75	80	32	56	54	5	19	60	61	24	9	97	7	13	87	701	
9:00 A 10:00 am	00 a 15	17	90	83	47	53	45	5	26	69	55	15	15	110	4	17	72	723	2893
	15 a 30	18	76	55	32	37	38	10	42	63	65	10	6	97	4	15	66	634	
	30 a 45	22	111	67	36	46	30	2	34	58	49	25	4	121	7	10	76	698	
	45 a 00	19	118	90	40	82	39	8	40	73	64	24	13	144	2	9	73	838	
10:00 A 11:00 am	00 a 15	19	137	119	50	90	51	3	49	88	59	31	17	153	6	16	82	970	2657
	15 a 30	22	91	65	26	43	23	2	23	68	38	21	6	101	2	12	76	619	
	30 a 45	14	48	69	42	31	25	2	21	68	43	14	6	101	4	11	67	566	
	45 a 00	24	49	48	33	31	18	1	14	48	46	15	5	85	5	8	72	502	
3:00 A 4:00 pm	00 a 15	28	31	39	19	35	27	8	25	69	35	18	5	92	10	10	52	503	2406
	15 a 30	28	90	29	34	62	54	4	31	71	45	31	9	89	4	9	52	642	
	30 a 45	33	62	52	40	76	45	2	24	66	42	23	8	101	3	11	56	644	
	45 a 00	30	86	49	29	63	47	2	24	71	39	27	9	70	4	10	57	617	
4:00 A 5:00 pm	00 a 15	21	108	36	28	49	29	3	25	50	53	20	5	78	2	10	60	577	2016
	15 a 30	20	96	39	26	82	30	1	25	66	57	24	6	73	2	13	67	627	
	30 a 45	20	53	37	28	34	30	0	13	50	27	13	8	54	4	13	48	432	
	45 a 00	21	38	39	31	24	28	2	11	33	45	11	12	45	6	12	22	380	



MOVIMIENTOS Y VOLUMENES VEHICULAR (HORA PICO)

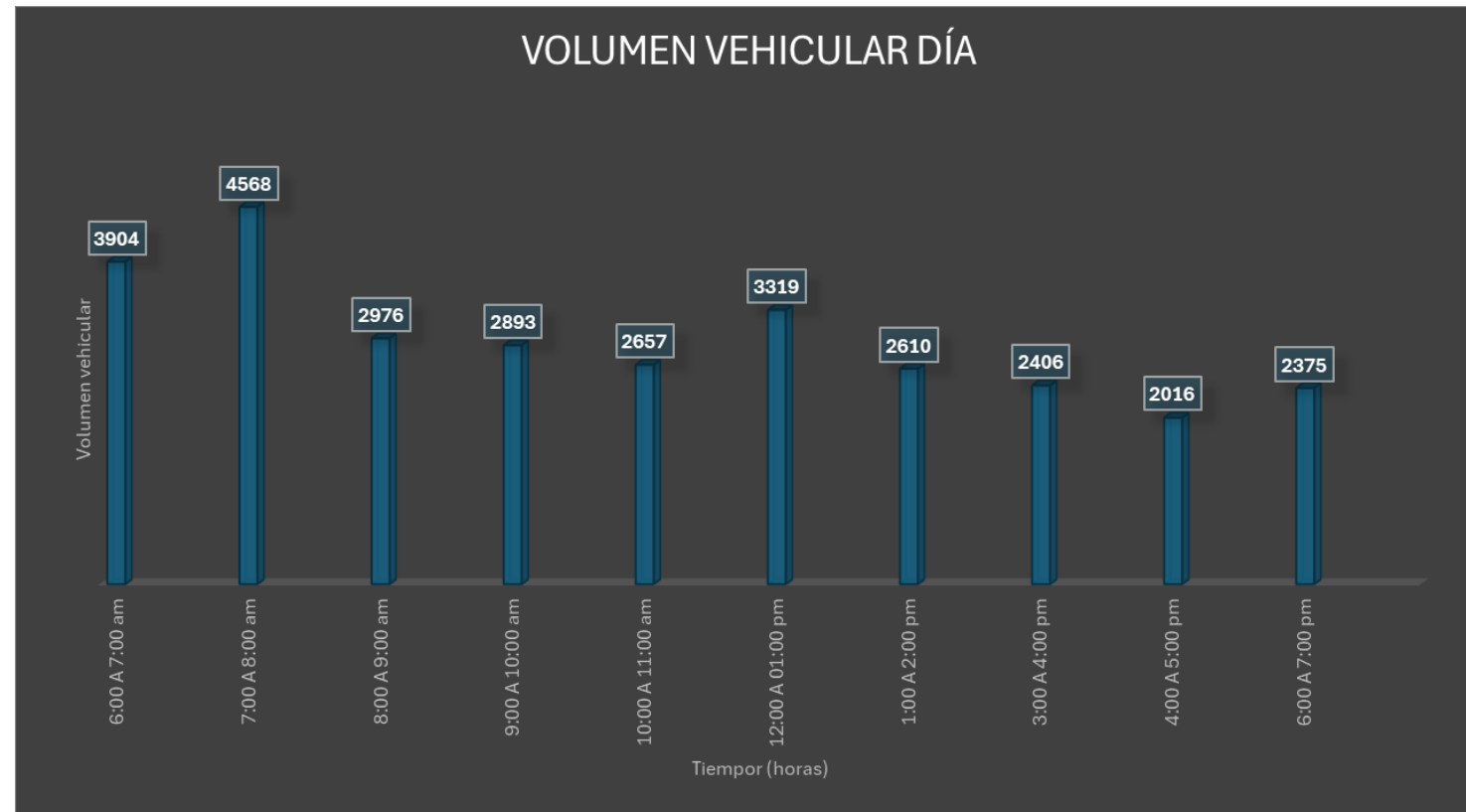
HORA	PERIODO	MOVIMIENTOS VEHICULRES (HORAS PICO)																VOLUMEN
		1	2	3	4	1(a)	2(a)	3(a)	4(a)	1(b)	2(b)	3(b)	4(b)	1(c)	2(c)	3(c)	4(c)	
6:00 A 7:00 am	00 a 15	28	122	87	46	101	80	13	72	125	96	39	10	120	12	12	76	1039
	15 a 30	20	102	96	67	109	62	9	65	124	100	33	7	121	7	11	89	1022
	30 a 45	27	91	82	57	80	65	6	42	92	101	32	10	122	7	13	83	910
	45 a 00	25	114	92	58	80	60	6	34	73	105	41	8	99	9	26	103	933
7:00 A 8:00 am	00 a 15	19	143	105	57	79	70	6	66	79	100	27	14	109	4	24	80	982
	15 a 30	17	132	86	64	89	78	9	55	91	87	29	6	142	7	23	69	984
	30 a 45	42	173	98	65	108	83	7	75	87	96	43	4	134	8	40	90	1153
12:00 A 01:00 pm	45 a 00	39	185	128	88	157	128	18	92	113	121	56	10	162	8	49	95	1449
	00 a 15	32	119	101	53	135	65	9	68	93	92	48	17	146	6	26	87	1097
	15 a 30	17	76	83	49	96	44	5	44	74	85	30	10	99	4	36	75	827
	30 a 45	22	54	97	43	90	27	7	58	81	58	29	8	91	2	12	68	747
1:00 A 2:00 pm	45 a 00	19	58	83	36	68	34	6	35	50	66	23	4	81	3	12	70	648
	00 a 15	19	41	53	20	69	29	9	44	76	65	26	4	85	10	11	58	619
	15 a 30	19	90	52	32	59	56	6	31	65	58	37	8	87	6	21	68	695
	30 a 45	22	92	52	42	64	46	4	36	47	61	23	10	88	7	19	55	668
6:00 A 7:00 pm	45 a 00	20	90	44	37	65	45	8	20	65	53	29	7	83	4	9	49	628
	00 a 15	18	88	42	41	73	40	5	32	63	55	22	5	87	5	15	49	640
	15 a 30	20	77	47	37	71	32	3	48	60	41	22	6	80	5	18	64	631
	30 a 45	13	52	45	26	56	41	2	45	32	35	22	7	64	10	18	50	518
	45 a 00	15	33	44	30	66	55	4	51	54	53	20	3	51	7	16	84	586



VOLUMEN VEHICULAR DÍA

VOLUMEN	
6:00 A 7:00 am	3904
7:00 A 8:00 am	4568
8:00 A 9:00 am	2976
9:00 A 10:00 am	2893
10:00 A 11:00 am	2657
12:00 A 01:00 pm	3319
1:00 A 2:00 pm	2610
3:00 A 4:00 pm	2406
4:00 A 5:00 pm	2016
6:00 A 7:00 pm	2375

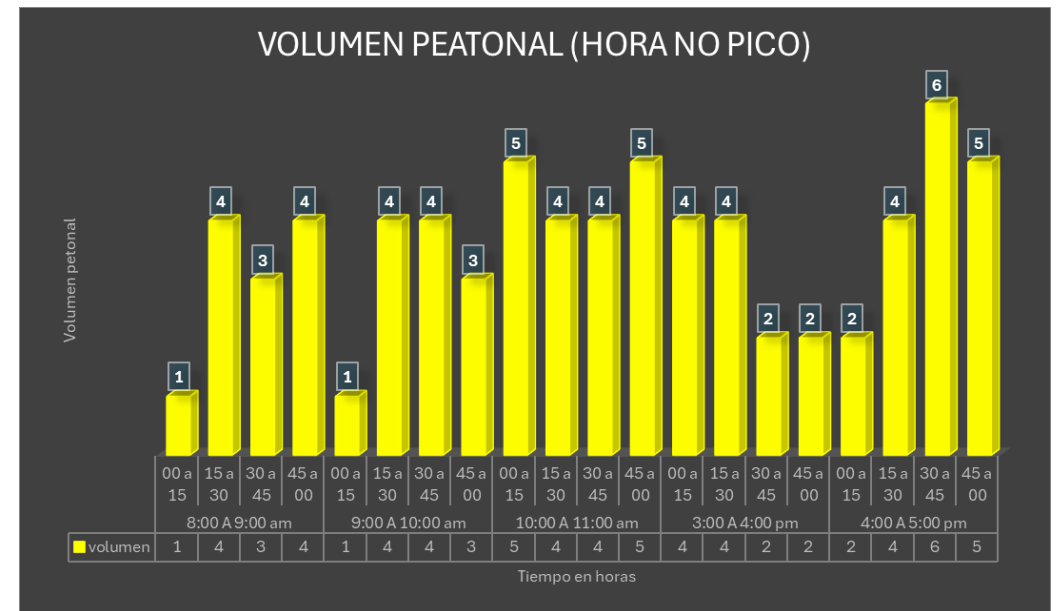
29724



AFORO Y VOLUMEN PEATONAL (HORA NO PICO)



FECHA:	Jueves, 29 de Febrero de 2024		CIUDAD:		Barrancabermeja					
HORA	PERIODO	AFORO PEATONAL (HORA NO PICO)							volumen	volumen
HORA	PERIODO	1	2	3	4	5	6	7	volumen	volumen
8:00 A 9:00 am	00 a 15	0	1	0	0	0	0	0	1	12
	15 a 30	1	1	0	0	2	0	0	4	
	30 a 45	0	1	1	0	1	0	0	3	
	45 a 00	0	0	1	1	2	0	0	4	
9:00 A 10:00 am	00 a 15	0	0	0	0	1	0	0	1	12
	15 a 30	0	1	0	1	1	1	0	4	
	30 a 45	0	2	1	0	1	0	0	4	
	45 a 00	0	1	0	1	1	0	0	3	
10:00 A 11:00 am	00 a 15	1	1	1	1	0	0	1	5	18
	15 a 30	0	2	1	0	0	1	0	4	
	30 a 45	0	2	2	0	0	0	0	4	
	45 a 00	0	3	1	0	1	0	0	5	
3:00 A 4:00 pm	00 a 15	1	2	0	0	1	0	0	4	12
	15 a 30	1	1	0	1	1	0	0	4	
	30 a 45	0	0	0	0	2	0	0	2	
	45 a 00	0	0	0	0	1	1	0	2	
4:00 A 5:00 pm	00 a 15	0	0	1	0	1	0	0	2	17
	15 a 30	0	1	1	0	0	1	1	4	
	30 a 45	1	3	1	1	0	0	0	6	
	45 a 00	1	2	1	0	1	0	0	5	
TOTAL		6	24	12	6	17	4	2		71



AFORO Y VOLUMEN PEATONAL (HORA PICO)

FECHA:	Jueves, 29 de Febrero de 2024		CIUDAD:	Barrancabermeja						
HORA	PERIODO	AFORO PEATONAL (HORA PICO)								
HORA	PERIODO	1	2	3	4	5	6	7	volumen	volumen
6:00 A 7:00 am	00 a 15	0	3	0	0	4	3	0	10	66
	15 a 30	3	6	0	0	3	4	0	16	
	30 a 45	1	7	0	1	2	7	0	18	
	45 a 00	5	5	0	1	1	10	0	22	
7:00 A 8:00 am	00 a 15	1	1	3	2	3	3	0	13	126
	15 a 30	2	8	4	3	1	3	0	21	
	30 a 45	6	4	5	5	9	5	4	38	
	45 a 00	7	7	6	14	8	9	3	54	
12:00 A 01:00 pm	00 a 15	0	1	0	8	5	6	2	22	90
	15 a 30	1	3	0	9	7	8	1	29	
	30 a 45	0	6	0	3	4	11	0	24	
	45 a 00	3	0	0	2	5	5	0	15	
1:00 A 2:00 pm	00 a 15	1	1	1	1	3	0	0	7	35
	15 a 30	4	1	0	1	5	1	0	12	
	30 a 45	0	0	0	0	3	1	0	4	
	45 a 00	1	0	0	0	6	5	0	12	
6:00 A 7:00 pm	00 a 15	0	3	0	1	9	15	0	28	93
	15 a 30	1	4	0	3	3	7	3	21	
	30 a 45	2	1	0	0	4	10	6	23	
	45 a 00	4	1	0	0	1	13	2	21	
TOTAL		42	62	19	54	86	126	21		410

